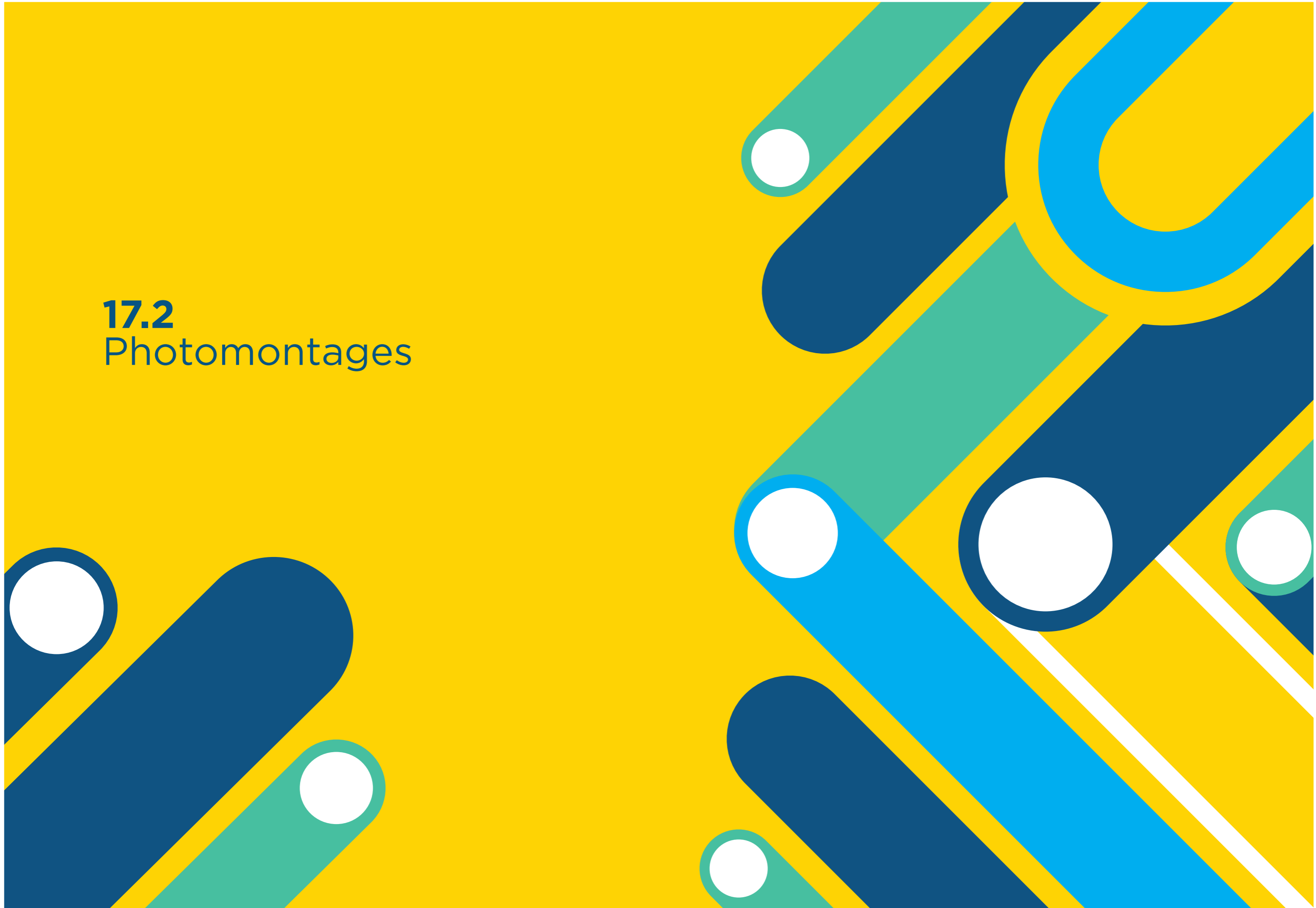


17.2
Photomontages





Disclaimer:
 a. National Transport Authority (NTA) 2022. This drawing is confidential and the copyright in it is owned by NTA. This drawing must not be either loaned, copied or otherwise reproduced in whole or in part or used for any purpose without the prior permission of NTA.
 b. This drawing is to be used for the design element identified in the Release. Other information shown is to be considered indicative only. The drawing is to be read in conjunction with all other relevant design drawings.
 c. O.S. data used for plans are printed under © Ordnance Survey Ireland Government of Ireland. All rights reserved. Licence Number 2022/055, NMA, 180 National Transport Authority. All elements are in metres and relate to OS Grid Model (OSGM15) Main Head. All Co-ordinates are in Irish

Transverse Mercator Grid (ITM) as defined by OSI active local GPS station.
 d. Information concerning the position of apparatus shown on this drawing is based on drawings supplied by the utility owners and/or the utility works contractor, whilst every care has been taken in the preparation of this drawing, positions should be taken as approximate and are intended for general guidance only and no representation is made to the NTA as to the accuracy, completeness, sufficiency or otherwise of this drawing and the position of the apparatus. The information contained herein does not purport to be comprehensive or final as the apparatus is subject to being altered and/or superseded. Recipients should not rely on this information. Any liabilities are hereby expressly disclaimed.

e. The information contained herein has been provided by the NTA but does not purport to be comprehensive or final. Recipients should not rely on the information. Neither the NTA nor any of its directors, officers, employees, agents, consultants or advisers make any representation or warranty as to, or accept any liability or responsibility in relation to, the adequacy, accuracy, reasonableness or completeness of the information provided as part of this document or any matter on which the information is based (including but not limited to loss or damage arising as a result of reliance by recipients on the information or any part of it. Any liabilities are hereby expressly disclaimed.



Rev	Date	Drn	Chkd	App'd	Description
M01	23/09/22	DS	AD	CA	ISSUE FOR PHASE 4 : PLANNING

Client: **NTA**
 Údarás Náisiúnta Iompair
 National Transport Authority

Consultant: **3D DESIGN BUREAU**

Date: 23/09/2022
 Scale: @ A3
 Project Code: BCIDA
 Originator Code: ACM

Drawn: DS
 Checked: AD
 Approved: CA

Project Title: **Lucan to City Centre Core Bus Corridor Scheme**

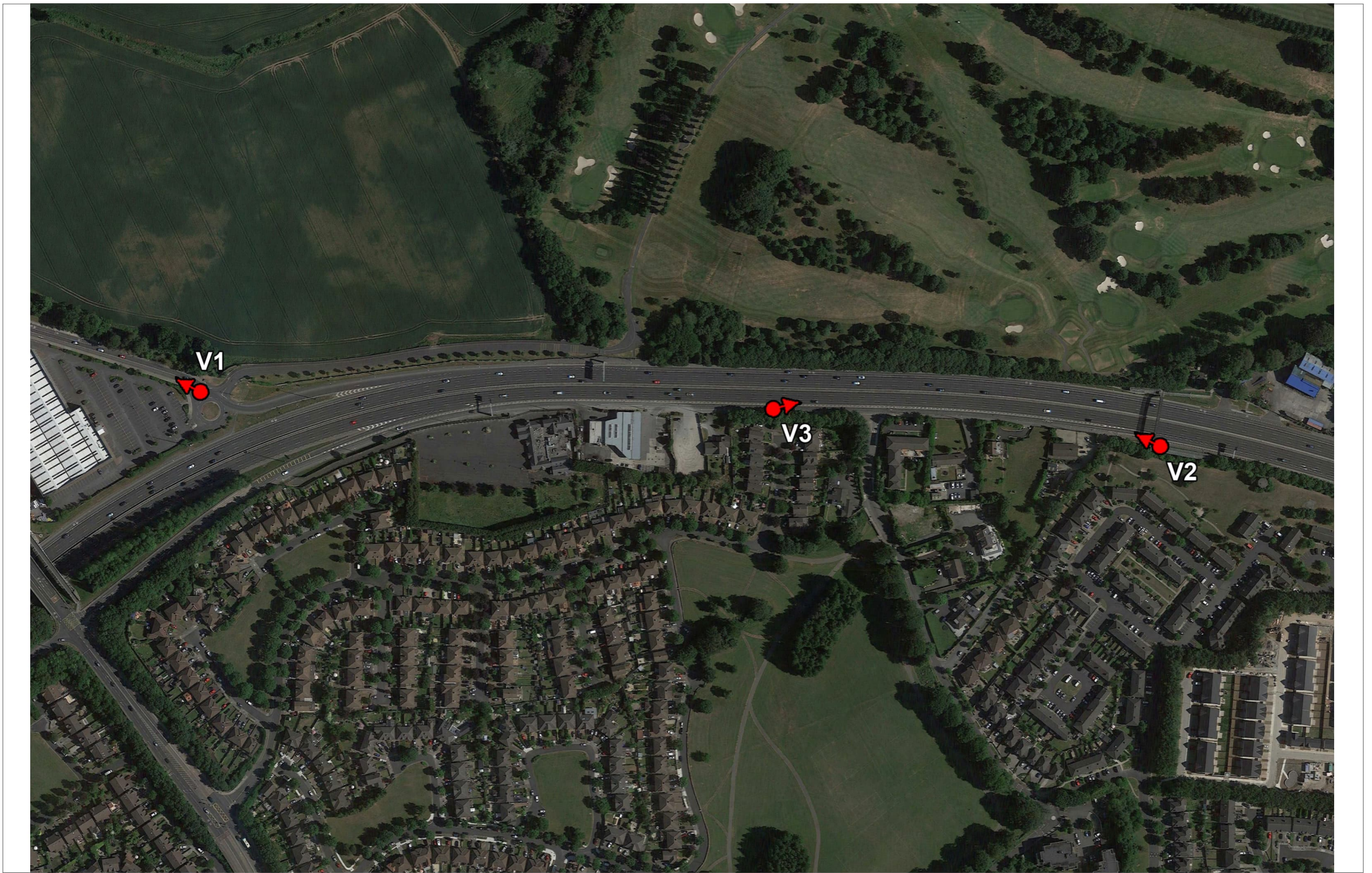
Drawing Title: **Figure 17.2.0.1 View Location Summary Map**

Drawing File Reference: **BCIDA-ACM-ENV_LA-0006_XX_00-DR-LL-000**

Sheet Number: **1 of 37**

Status: **A**

Rev: **M01**



Disclaimer:
 a. National Transport Authority (NTA) 2022. This drawing is confidential and the copyright in it is owned by NTA. This drawing must not be either loaned, copied or otherwise reproduced in whole or in part or used for any purpose without the prior permission of NTA.
 b. This drawing is to be used for the design element identified in the Release. Other information shown is to be considered indicative only. The drawing is to be read in conjunction with all other relevant design drawings.
 c. O.S. data used for plans are printed under © Ordnance Survey Ireland Government of Ireland. All rights reserved. Licence Number 2022/OS, NMA, 180 National Transport Authority. All elevations are in metres and relate to OS Geoid Model (OSGM15) Mean Head. All Co-ordinates are in Irish

Transverse Mercator Grid (ITM) as defined by OSI active local GPS station.
 d. Information concerning the position of apparatus shown on this drawing is based on drawings supplied by the utility owners and/or the utility works contractor, whilst every care has been taken in the preparation of this drawing, positions should be taken as approximate and are intended for general guidance only and no representation is made to the NTA as to the accuracy, completeness, sufficiency or otherwise of this drawing and the position of the apparatus. The information contained herein does not purport to be comprehensive or final as the apparatus is subject to being altered and/or superseded. Recipients should not rely on this information. Any liabilities are hereby expressly disclaimed.

e. The information contained herein has been provided by the NTA but does not purport to be comprehensive or final. Recipients should not rely on the information. Neither the NTA nor any of its directors, officers, employees, agents, consultants or advisers make any representation or warranty as to, or accept any liability or responsibility in relation to, the substance, accuracy, reasonableness or completeness of the information provided as part of this document or any matter on which the information is based (including but not limited to loss or damage arising as a result of reliance by recipients on the information or any part of it. Any liabilities are hereby expressly disclaimed.



Rev	Date	Drn	Chk'd	App'd	Description
M01	23/09/22	DS	AD	CA	ISSUE FOR PHASE 4 : PLANNING

Client: **NTA**
 Údarás Náisiúnta Iompair
 National Transport Authority

Date: 23/09/2022
 Scale: @ A3
 NTS

Project Code: BCIDA
 Originator Code: ACM

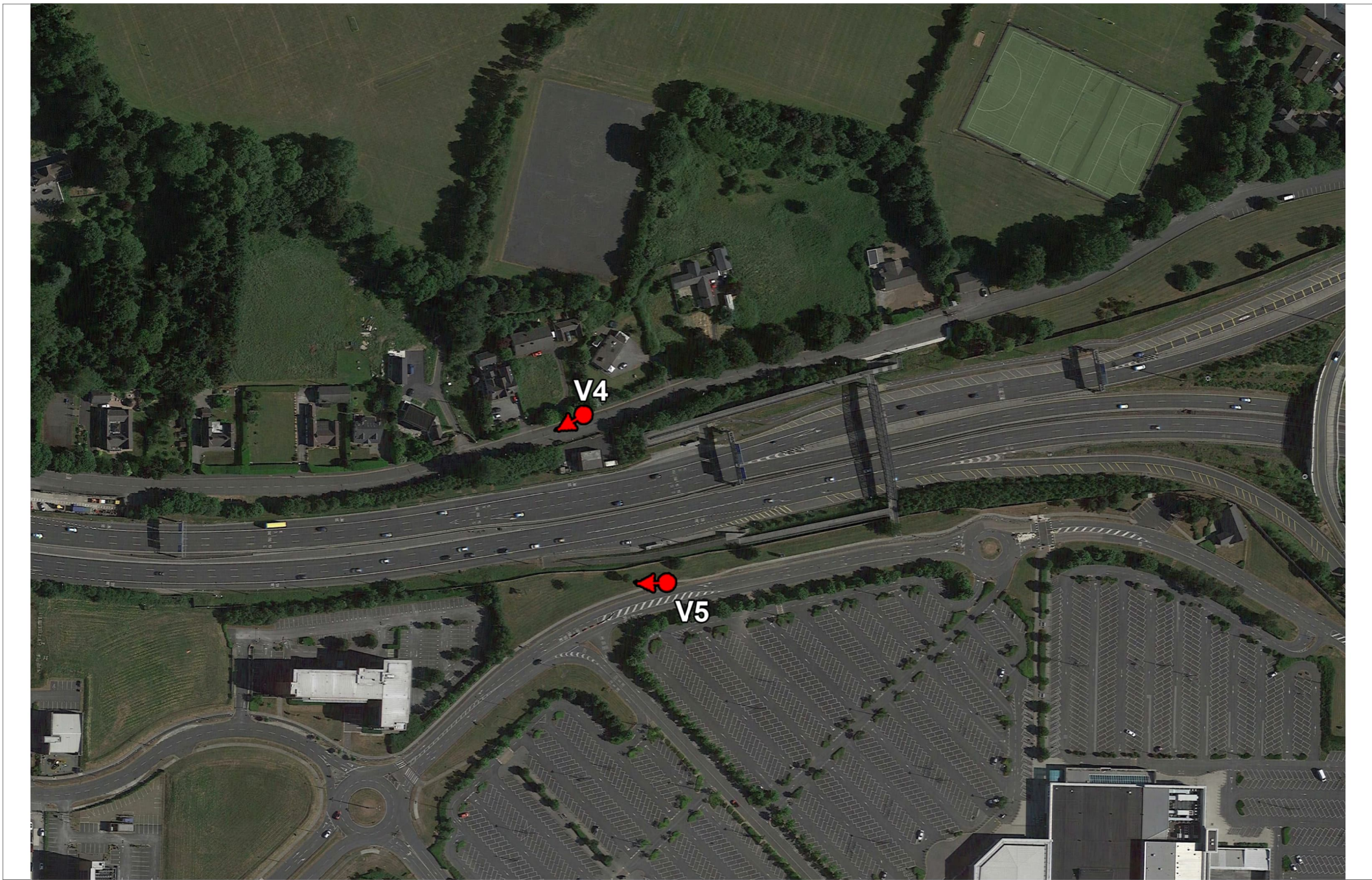
Consultant: **3D DESIGN BUREAU**

Drawn: DS
 Checked: AD
 Approved: CA

Project Title: Lucan to City Centre Core Bus Corridor Scheme

Drawing Title: Figure 17.2.0.2
 View Location Short Range Map 1

Drawing File Reference: BCIDA-ACM-ENV_LA-0006_XX_00-DR-LL-000
 Sheet Number: 2 of 37
 Status: A
 Rev: M01



Disclaimer:
 a. National Transport Authority (NTA) 2022. This drawing is confidential and the copyright in it is owned by NTA. This drawing must not be either loaned, copied or otherwise reproduced in whole or in part or used for any purpose without the prior permission of NTA.
 b. This drawing is to be used for the design element identified in the Release. Other information shown is to be considered indicative only. This drawing is to be read in conjunction with all other relevant design drawings.
 c. O.S. data used for plans are printed under © Ordnance Survey Ireland Government of Ireland. All rights reserved. Licence Number 2022/055. NMA, 180 National Transport Authority. All elevations are in metres and relate to OS Grid Model (OSGM15) Mean Head. All Co-ordinates are in Irish

Transverse Mercator Grid (ITM) as defined by OSI active local GPS station.
 d. Information concerning the position of apparatus shown on this drawing is based on drawings supplied by the utility owners and/or the utility works contractor, whilst every care has been taken in the preparation of this drawing, positions should be taken as approximate and are intended for general guidance only and no representation is made to the NTA as to the accuracy, completeness, sufficiency or otherwise of this drawing and the position of the apparatus. The information contained herein does not purport to be comprehensive or final as the apparatus is subject to being altered and/or superseded. Recipients should not rely on this information. Any liabilities are hereby expressly disclaimed.

e. The information contained herein has been provided by the NTA but does not purport to be comprehensive or final. Recipients should not rely on the information. Neither the NTA nor any of its directors, officers, employees, agents, consultants or advisers make any representation or warranty as to, or accept any liability or responsibility in relation to, the accuracy, completeness, reasonableness or otherwise of the information provided as part of this document or any matter on which the information is based (including but not limited to loss or damage arising as a result of reliance by recipients on the information or any part of it. Any liabilities are hereby expressly disclaimed.



Rev	Date	Drn	Chkd	App'd	Description
M01	23/09/22	DS	AD	CA	ISSUE FOR PHASE 4 : PLANNING

Client
NTA
 Údarás Náisiúnta Iompair
 National Transport Authority

Consultant
3D DESIGN BUREAU

Date	Scale	Drawn	Checked	Approved
23/09/2022	@A3	DS	AD	CA
Project Code	Original Code	GMS Code:		
BCIDA	ACM			

Project Title
 Lucan to City Centre Core Bus Corridor Scheme

Drawing Title
 Figure 17.2.0.3
 View Location Short Range Map 2

Drawing File Reference
 BCIDA-ACM-ENV_LA-0006_XX_00-DR-LL-000

Sheet Number
 3 of 37

Status
 A

Rev
 M01



Disclaimer
 a. National Transport Authority (NTA) 2022. This drawing is confidential and the copyright in it is owned by NTA. This drawing must not be either loaned, copied or otherwise reproduced in whole or in part or used for any purpose without the prior permission of NTA.
 b. This drawing is to be used for the design element identified in the Release. Other information shown is to be considered indicative only. The drawing is to be read in conjunction with all other relevant design drawings.
 c. U.S. data used for plans are printed under © Ordnance Survey Ireland Government of Ireland. All rights reserved. Licence Number 2022/055, NMA, 180 National Transport Authority. All elevations are in metres and relate to OS Grid Model (OSGM15) Mean Head. All Co-ordinates are in Irish

Transverse Mercator Grid (ITM) as defined by OSI active local GPS station.
 d. Information concerning the position of apparatus shown on this drawing is based on drawings supplied by the utility owners and the utility works contractor, whilst every care has been taken in the preparation of this drawing, positions should be taken as approximate and are intended for general guidance only and no representation is made to the NTA as to the accuracy, completeness, sufficiency or otherwise of this drawing and no position of the apparatus is shown on this drawing and no position of the apparatus is shown on this drawing and no position of the apparatus is shown on this drawing.
 e. The information contained herein has been provided by the NTA but does not purport to be comprehensive or final. Recipients should not rely on the information, neither the NTA nor any of its directors, officers, employees, agents, consultants or advisers make any representation or warranty as to, or accept any liability or responsibility in relation to, the adequacy, accuracy, reasonableness or completeness of the information provided as part of this document or any matter on which the information is based (including but not limited to loss or damage arising as a result of reliance on the information or any part of it. Any liabilities are hereby expressly disclaimed.

e. The information contained herein has been provided by the NTA but does not purport to be comprehensive or final. Recipients should not rely on the information, neither the NTA nor any of its directors, officers, employees, agents, consultants or advisers make any representation or warranty as to, or accept any liability or responsibility in relation to, the adequacy, accuracy, reasonableness or completeness of the information provided as part of this document or any matter on which the information is based (including but not limited to loss or damage arising as a result of reliance on the information or any part of it. Any liabilities are hereby expressly disclaimed.



Rev	Date	Drn	Chkd	App'd	Description
M01	23/09/22	DS	AD	CA	ISSUE FOR PHASE 4 : PLANNING

Client
NTA
 Údarás Náisiúnta Iompair
 National Transport Authority

Date
 23/09/2022

Project Code
 BCIDA

Scale
 @ A3
 NTS

Originator Code
 ACM

Drawn	DS	Checked	AD	Approved	CA

GMS Code:

Consultant
3D DESIGN BUREAU

Project Title
 Lucan to City Centre Core Bus Corridor Scheme

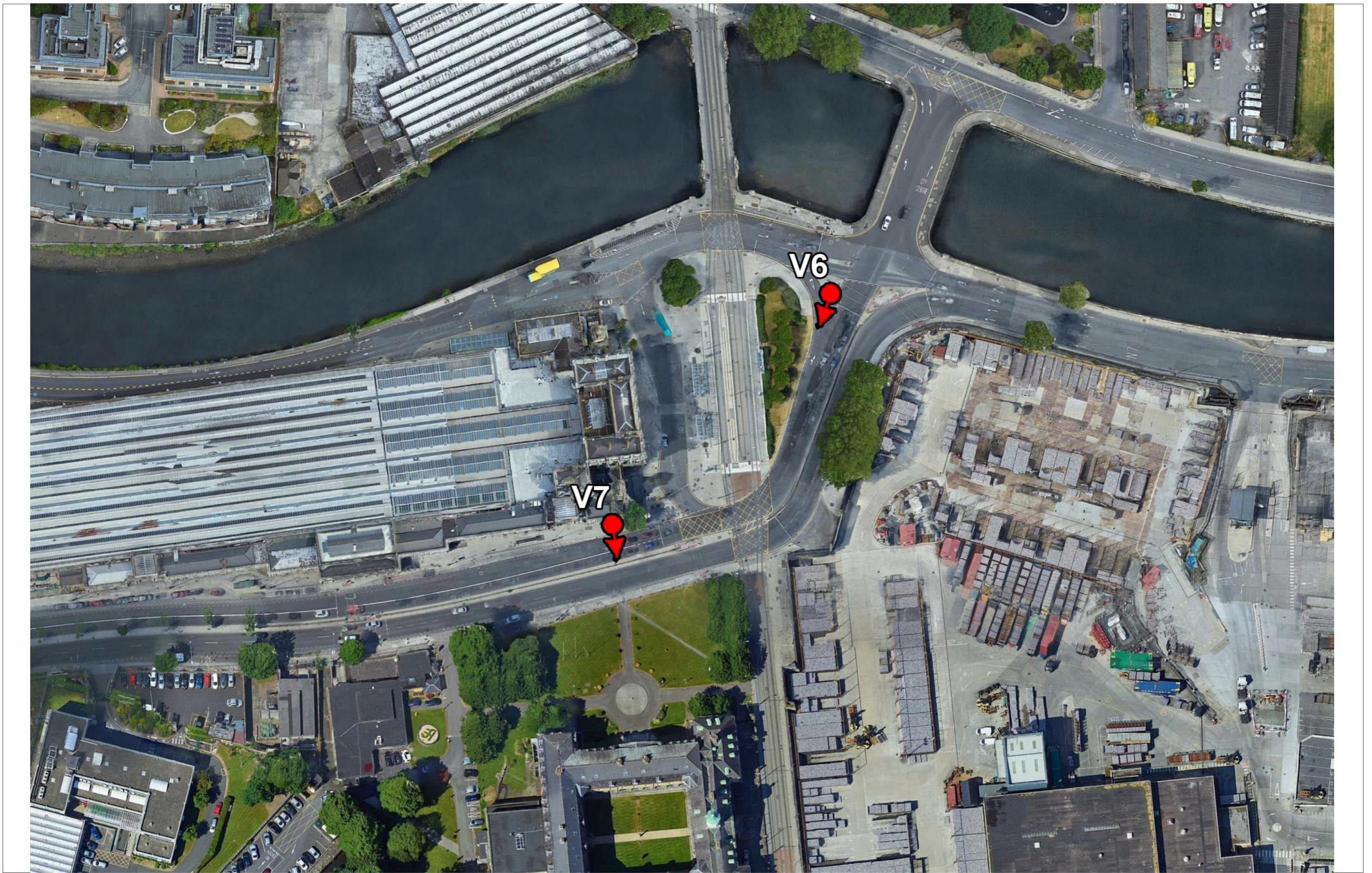
Drawing Title
 Figure 17.2.0.4
 View Location Short Range Map 3

Drawing File Reference
 BCIDA-ACM-ENV_LA-0006_XX_00-DR-LL-000

Sheet Number
 4 of 37

Status
 A

Rev
 M01



Disclaimer:
 a. National Transport Authority (NTA) 2022. This drawing is confidential and the copyright in it is owned by NTA. This drawing must not be either loaned, copied or otherwise reproduced in whole or in part or used for any purpose without the prior permission of NTA.
 b. This drawing is to be used for the design element identified in the Release. Other information shown is to be considered indicative only. The drawing is to be read in conjunction with all other relevant design drawings.
 c. O.S. data used for plans are printed under © Ordnance Survey Ireland's Government of Ireland. All rights reserved. Licence Number 2022/055, NIMA, 180 National Transport Authority. All elevations are in metres and relate to OSG (Geoid Model (OSGM15) Mean Head, AI Co-ordinates are in Irish

Transverse Mercator Grid (ITM) as defined by OSI active local GPS station.
 d. Information concerning the position of apparatus shown on this drawing is based on drawings supplied by the utility owners and the utility works contractor, whilst every care has been taken in the preparation of this drawing, positions should be taken as approximate and are intended for general guidance only and no representation is made to the NTA as to the accuracy, completeness, sufficiency or otherwise of the information provided as part of this document or any matter on which the information is based (including but not limited to loss or damage arising as a result of reliance by recipients on the information or any part of it. Any liabilities are hereby expressly disclaimed.

e. The information contained herein has been provided by the NTA but does not purport to be comprehensive or final. Recipients should not rely on the information. Neither the NTA nor any of its directors, officers, employees, agents, consultants or advisers make any representation or warranty as to, or accept any liability or responsibility in relation to, the adequacy, accuracy, reasonableness or completeness of the information provided as part of this document or any matter on which the information is based (including but not limited to loss or damage arising as a result of reliance by recipients on the information or any part of it. Any liabilities are hereby expressly disclaimed.



Rev	Date	Drn	Chk'd	App'd	Description
M01	23/09/22	DS	AD	CA	ISSUE FOR PHASE 4 : PLANNING

Client
NTA
 Údarás Náisiúnta Iompair
 National Transport Authority

Date
 23/09/2022

Project Code
 BCIDA

Consultant
3D DESIGN BUREAU

Scale @ A3
 NTS

Originator Code
 ACM

Drawn	DS	Checked	AD	Approved	CA
-------	----	---------	----	----------	----

GMS Code:

Project Title
 Lucan to City Centre Core Bus Corridor Scheme

Drawing Title
 Figure 17.2.0.5
 View Location Short Range Map 4

Drawing File Reference
 BCIDA-ACM-ENV_LA-0006_XX_00-DR-LL-000

Sheet Number
 5 of 37

Status
 A

Rev
 M01



< 73.7° / 24mm < 65.5° / 28mm < 54.4° / 35mm < 39.6° / 50mm < 28.8° / 70mm ANGLE OF VISION / LENS FOCAL LENGTH 70mm / 28.8° > 50mm / 39.6° > 35mm / 54.4° > 28mm / 65.5° > 24mm / 73.7° >

Date and Time of baseline photograph: 16/09/2020 09:42:51

Disclaimer
 a. National Transport Authority (NTA) 2022. This drawing is confidential and the copyright in it is owned by NTA. This drawing must not be either loaned, copied or otherwise reproduced in whole or in part or used for any purpose without the prior permission of NTA.
 b. This drawing is to be used for the design element identified in the Block. Other information shown is to be considered indicative only. The drawing is to be read in conjunction with all other relevant design drawings.
 c. O.S. data used for plans are printed under © Ordnance Survey Ireland Government of Ireland. All rights reserved. Licence Number 2022/OSI, NMA, 180 National Transport Authority. All elevations are in metres and relate to OS Grid Model (OSGM15) Mean Head. All Co-ordinates are in Irish

Transverse Mercator Grid (ITM) as defined by OSI active local GPS station.
 d. Information concerning the position of apparatus shown on this drawing is based on drawings supplied by the utility owners and the utility works contractor. Whilst every care has been taken in the preparation of this drawing, positions should be taken as approximate and are intended for general guidance only and no representation is made to the NTA as to the accuracy, completeness, sufficiency or otherwise of this drawing and the position of the apparatus. The information contained herein does not purport to be comprehensive or final as the apparatus is subject to being altered and/or superseded. Recipients should not rely on this information. Any liabilities are hereby expressly disclaimed.

e. The information contained herein has been provided by the NTA but does not purport to be comprehensive or final. Recipients should not rely on the information. Neither the NTA nor any of its directors, officers, employees, agents, consultants or advisers make any representation or warranty as to, or accept any liability or responsibility in relation to, the adequacy, accuracy, reasonableness or completeness of the information provided as part of this document or any matter on which the information is based (including but not limited to loss or damage arising as a result of reliance by recipients on the information or any part of it. Any liabilities are hereby expressly disclaimed.



Rev	Date	Drn	Chk'd	App'd	Description
M01	23/09/22	DS	AD	CA	ISSUE FOR PHASE 4 : PLANNING

Client
NTA
 Údarás Náisiúnta Iompair
 National Transport Authority

Date: 23/09/2022
 Project Code: BCIDA

Consultant
3D DESIGN BUREAU

Scale @ A3: N/A

Drawn	Checked	Approved
DS	AD	CA

GMS Code:

Project Title: Lucan to City Centre Core Bus Corridor Scheme

Drawing Title: Figure 17.2.1.1
 Photomontage View 01 As Existing
 View from Southeast along Old Lucan Road (at Woodies Roundabout)

Drawing File Reference: BCIDA-ACM-ENV_LA-0006_XX_00-DR-LL-000
 Sheet Number: 6 of 37
 Status: A
 Rev: M01



< 73.7° / 24mm | < 65.5° / 28mm | < 54.4° / 35mm | < 39.6° / 50mm | < 28.8° / 70mm | ANGLE OF VISION / LENS FOCAL LENGTH | 70mm / 28.8° > | 50mm / 39.6° > | 35mm / 54.4° > | 28mm / 65.5° > | 24mm / 73.7° > |

Date and Time of baseline photograph: 16/09/2020 09:42:51

Disclaimer
 a. National Transport Authority (NTA) 2022. This drawing is confidential and the copyright in it is owned by NTA. This drawing must not be either loaned, copied or otherwise reproduced in whole or in part or used for any purpose without the prior permission of NTA.
 b. This drawing is to be used for the design element identified in the Release. Other information shown is to be considered indicative only. The drawing is to be read in conjunction with all other relevant design drawings.
 c. O.S. data used for plans are printed under © Ordnance Survey Ireland Government of Ireland. All rights reserved. Licence Number 2022/OSI, NMA, 180 National Transport Authority. All elevations are in metres and relate to OS (Geoid Model (OSGM15) Mean Head. All Co-ordinates are in Irish

Transverse Mercator Grid (ITM) as defined by OSI active local GPS station.
 d. Information concerning the position of apparatus shown on this drawing is based on drawings supplied by the utility owners and/or the utility works contractor, whilst every care has been taken in the preparation of this drawing, positions should be taken as approximate and are intended for general guidance only and no representation is made to the NTA as to the accuracy, completeness, sufficiency or otherwise of this drawing and the position of the apparatus. The information contained herein does not purport to be comprehensive or final as the apparatus is subject to being altered and/or superseded. Recipients should not rely on this information. Any liabilities are hereby expressly disclaimed.

e. The information contained herein has been provided by the NTA but does not purport to be comprehensive or final. Recipients should not rely on the information. Neither the NTA nor any of its directors, officers, employees, agents, stakeholders or advisers make any representation or warranty as to, or accept any liability or responsibility in relation to, the adequacy, accuracy, reasonableness or completeness of the information provided as part of this document or any matter on which the information is based (including but not limited to loss or damage arising as a result of reliance by recipients on the information or any part of it. Any liabilities are hereby expressly disclaimed.




Rev	Date	Drn	Chk'd	App'd	Description
M01	23/09/22	DS	AD	CA	ISSUE FOR PHASE 4 : PLANNING

Client

 Údarás Náisiúnta Iompair
 National Transport Authority

Date: 23/09/2022
 Scale: @ A3
 Project Code: BCIDA
 Original Code: ACM

Consultant

 3D DESIGN BUREAU

Drawn: DS
 Checked: AD
 Approved: CA

GMS Code:

Project Title: Lucan to City Centre Core Bus Corridor Scheme

Drawing Title: Figure 17.2.1.2
 Photomontage View 01 As Proposed
 View from Southeast along Old Lucan Road (at Woodies Roundabout)

Drawing File Reference: BCIDA-ACM-ENV_LA-0006_XX_00-DR-LL-000
 Sheet Number: 7 of 37
 Status: A
 Rev: M01



< 39.6° / 50mm | < 28.8° / 70mm | ANGLE OF VISION / LENS FOCAL LENGTH | 70mm / 28.8° > | 50mm / 39.6° >

Date and Time of baseline photograph: 16/09/2020 09:42:51

Disclaimer
 a. National Transport Authority (NTA) 2022. This drawing is confidential and the copyright in it is owned by NTA. This drawing must not be either loaned, copied or otherwise reproduced in whole or in part or used for any purpose without the prior permission of NTA.
 b. This drawing is to be used for the design element identified in the Release. Other information shown is to be considered indicative only. The drawing is to be read in conjunction with all other relevant design drawings.
 c. O.S. data used for plans are printed under © Ordnance Survey Ireland Government of Ireland. All rights reserved. Licence Number 2022/OSI, NMA, 180 National Transport Authority. All elevations are in metres and relate to OS Geoid Model (OSGM15) Mean Head. All Co-ordinates are in Irish

Transverse Mercator Grid (ITM) as defined by OSI active local GPS station.
 d. Information concerning the position of apparatus shown on this drawing is based on drawings supplied by the utility owners and/or the utility works contractor, whilst every care has been taken in the preparation of this drawing, positions should be taken as approximate and are intended for general guidance only and no representation is made to the NTA as to the accuracy, completeness, sufficiency or otherwise of this drawing and the position of the apparatus. The information contained herein does not purport to be comprehensive or final as the apparatus is subject to being altered and/or superseded. Recipients should not rely on this information. Any liabilities are hereby expressly disclaimed.

e. The information contained herein has been provided by the NTA but does not purport to be comprehensive or final. Recipients should not rely on the information. Neither the NTA nor any of its directors, officers, employees, agents, consultants or advisers make any representation or warranty as to, or accept any liability or responsibility in relation to, the adequacy, accuracy, reasonableness or completeness of the information provided as part of this document or any matter on which the information is based (including but not limited to loss or damage arising as a result of reliance by recipients on the information or any part of it. Any liabilities are hereby expressly disclaimed.



Rev	Date	Drn	Chk'd	App'd	Description
M01	23/09/22	DS	AD	CA	ISSUE FOR PHASE 4 : PLANNING

Client
NTA
 Údarás Náisiúnta Iompair
 National Transport Authority

Date: 23/09/2022
 Scale: @ A3
 Project Code: BCIDA
 Originator Code: ACM

Consultant
3D DESIGN BUREAU

Drawn: DS
 Checked: AD
 Approved: CA

GMS Code:

Project Title: Lucan to City Centre Core Bus Corridor Scheme

Drawing Title: Figure 17.2.1.3
 Photomontage View 01 As Existing
 View from Southeast along Old Lucan Road (at Woodies Roundabout)

Drawing File Reference: BCIDA-ACM-ENV_LA-0006_XX_00-DR-LL-000
 Sheet Number: 8 of 37
 Status: A
 Rev: M01



< 39.6° / 50mm | < 28.8° / 70mm | ANGLE OF VISION / LENS FOCAL LENGTH | 70mm / 28.8° > | 50mm / 39.6° >

Date and Time of baseline photograph: 16/09/2020 09:42:51

Disclaimer
 a. National Transport Authority (NTA) 2022. This drawing is confidential and the copyright in it is owned by NTA. This drawing must not be either loaned, copied or otherwise reproduced in whole or in part or used for any purpose without the prior permission of NTA.
 b. This drawing is to be used for the design element identified in the Release. Other information shown is to be considered indicative only. The drawing is to be read in conjunction with all other relevant design drawings.
 c. O.S. data used for plans are printed under © Ordnance Survey Ireland Government of Ireland. All rights reserved. Licence Number 2022/OSS, NMA, 180 National Transport Authority. All elevations are in metres and relate to OS Grid Model (OSGM15) Mean Head. All Co-ordinates are in Irish

Transverse Mercator Grid (ITM) as defined by OSI active local GPS station.
 d. Information concerning the position of apparatus shown on this drawing is based on drawings supplied by the utility owners and/or the utility works contractor, whilst every care has been taken in the preparation of this drawing, positions should be taken as approximate and are intended for general guidance only and no representation is made to the NTA as to the accuracy, completeness, sufficiency or otherwise of this drawing and the position of the apparatus. The information contained herein does not purport to be comprehensive or final as the apparatus is subject to being altered and/or supplemented. Recipients should not rely on this information. Any liabilities are hereby expressly disclaimed.

e. The information contained herein has been provided by the NTA but does not purport to be comprehensive or final. Recipients should not rely on the information. Neither the NTA nor any of its directors, officers, employees, agents, consultants or advisers make any representation or warranty as to, or accept any liability or responsibility in relation to, the adequacy, accuracy, reasonableness or completeness of the information provided as part of this document or any matter on which the information is based (including but not limited to loss or damage arising as a result of reliance by recipients on the information or any part of it. Any liabilities are hereby expressly disclaimed.




Rev	Date	Drn	Chk'd	App'd	Description
M01	23/09/22	DS	AD	CA	ISSUE FOR PHASE 4 : PLANNING

Client

 Údarás Náisiúnta Iompair
 National Transport Authority

Date: 23/09/2022
 Scale: @ A3
 Project Code: BCIDA
 Originator Code: ACM

Consultant

 3D DESIGN BUREAU

Drawn: DS
 Checked: AD
 Approved: CA

GMS Code:

Project Title: Lucan to City Centre Core Bus Corridor Scheme

Drawing Title: Figure 17.2.1.4
 Photomontage View 01 As Proposed
 View from Southeast along Old Lucan Road (at Woodies Roundabout)

Drawing File Reference: BCIDA-ACM-ENV_LA-0006_XX_00-DR-LL-000
 Sheet Number: 9 of 37
 Status: A
 Rev: M01



< 73.7° / 24mm | < 65.5° / 28mm | < 54.4° / 35mm | < 39.6° / 50mm | < 28.8° / 70mm | ANGLE OF VISION / LENS FOCAL LENGTH | 70mm / 28.8° > | 50mm / 39.6° > | 35mm / 54.4° > | 28mm / 65.5° > | 24mm / 73.7° > |

Date and Time of baseline photograph: 16/09/2020 10:17:38

Disclaimer
 a. National Transport Authority (NTA) 2022. This drawing is confidential and the copyright in it is owned by NTA. This drawing must not be either loaned, copied or otherwise reproduced in whole or in part or used for any purpose without the prior permission of NTA.
 b. This drawing is to be used for the design element identified in the Release. Other information shown is to be considered indicative only. The drawing is to be read in conjunction with all other relevant design drawings.
 c. O.S. data used for plans are printed under © Ordnance Survey Ireland Government of Ireland. All rights reserved. Licence Number 2022/OSI, NMA, 180 National Transport Authority. All elevations are in metres and relate to OS Grid Model (OSGM15) Mean Head. All Co-ordinates are in Irish

Transverse Mercator Grid (ITM) as defined by OSI active local GPS station.
 d. Information concerning the position of apparatus shown on this drawing is based on drawings supplied by the utility owners and the utility works contractor, whilst every care has been taken in the preparation of this drawing, positions should be taken as approximate and are intended for general guidance only and no representation is made by the NTA as to the accuracy, completeness, sufficiency or otherwise of this drawing and the position of the apparatus. The information contained herein does not purport to be comprehensive or final as the apparatus is subject to being altered and/or superseded. Recipients should not rely on this information. Any liabilities are hereby expressly disclaimed.

e. The information contained herein has been provided by the NTA but does not purport to be comprehensive or final. Recipients should not rely on the information. Neither the NTA nor any of its directors, officers, employees, agents, consultants or advisers make any representation or warranty as to, or accept any liability or responsibility in relation to, the accuracy, accuracy, reasonableness or completeness of the information provided as part of this document or any matter on which the information is based (including but not limited to loss or damage arising as a result of reliance by recipients on the information or any part of it. Any liabilities are hereby expressly disclaimed.



Rev	Date	Drn	Chk'd	App'd	Description
M01	23/09/22	DS	AD	CA	ISSUE FOR PHASE 4 : PLANNING

Client
NTA
 Údarás Náisiúnta Iompair
 National Transport Authority

Date: 23/09/2022
 Scale: A3
 Project Code: BCIDA
 Originator Code: ACM

Consultant
3D DESIGN BUREAU

Drawn: DS
 Checked: AD
 Approved: CA

GMS Code:

Project Title: Lucan to City Centre Core Bus Corridor Scheme

Drawing Title: Figure 17.2.2.1
 Photomontage View 02 As Existing
 View from East from south side of N4 (close to service station)

Drawing File Reference: BCIDA-ACM-ENV_LA-0006_XX_00-DR-LL-000
 Sheet Number: 10 of 37
 Status: A
 Rev: M01



< 73.7° / 24mm | < 65.5° / 28mm | < 54.4° / 35mm | < 39.6° / 50mm | < 28.8° / 70mm | ANGLE OF VISION / LENS FOCAL LENGTH | 70mm / 28.8° > | 50mm / 39.6° > | 35mm / 54.4° > | 28mm / 65.5° > | 24mm / 73.7° >

Date and Time of baseline photograph: 16/09/2020 10:17:38

Disclaimer
 a. National Transport Authority (NTA) 2022. This drawing is confidential and the copyright in it is owned by NTA. This drawing must not be either loaned, copied or otherwise reproduced in whole or in part or used for any purpose without the prior permission of NTA.
 b. This drawing is to be used for the design element identified in the Release. Other information shown is to be considered indicative only. The drawing is to be read in conjunction with all other relevant design drawings.
 c. O.S. data used for plans are printed under © Ordnance Survey Ireland Government of Ireland. All rights reserved. Licence Number 2022/OSI_NMA_180 National Transport Authority. All elevations are in metres and relate to OS Grid Model (OSGM15) Mean Head. All Co-ordinates are in Irish

Transverse Mercator Grid (ITM) as defined by OSI active local GPS station.
 d. Information concerning the position of apparatus shown on this drawing is based on drawings supplied by the utility owners and the utility works contractor, whilst every care has been taken in the preparation of this drawing, positions should be taken as approximate and are intended for general guidance only and no representation is made by the NTA as to the accuracy, completeness, sufficiency or otherwise of this drawing and the position of the apparatus. The information contained herein does not purport to be comprehensive or final as the apparatus is subject to being altered and/or superseded. Recipients should not rely on this information. Any liabilities are hereby expressly disclaimed.

e. The information contained herein has been provided by the NTA but does not purport to be comprehensive or final. Recipients should not rely on the information. Neither the NTA nor any of its directors, officers, employees, agents, stakeholders or advisors make any representation or warranty as to, or accept any liability or responsibility in relation to, the adequacy, accuracy, reasonableness or completeness of the information provided as part of this document or any matter on which the information is based (including but not limited to loss or damage arising as a result of reliance by recipients on the information or any part of it. Any liabilities are hereby expressly disclaimed.



Rev	Date	Drn	Chk'd	App'd	Description
M01	23/09/22	DS	AD	CA	ISSUE FOR PHASE 4 : PLANNING

Client
NTA
 Údarás Náisiúnta Iompair
 National Transport Authority

Date: 23/09/2022
 Scale: @ A3
 Project Code: BCIDA
 Originator Code: ACM

Consultant
3D DESIGN BUREAU

Drawn	DS	Checked	AD	Approved	CA
-------	----	---------	----	----------	----

GMS Code:

Project Title
 Lucan to City Centre Core Bus Corridor Scheme

Drawing Title
 Figure 17.2.2.2
 Photomontage View 02 As Proposed
 View from East from south side of N4 (close to service station)

Drawing File Reference: BCIDA-ACM-ENV_LA-0006_XX_00-DR-LL-000
 Sheet Number: 11 of 37
 Status: A
 Rev: M01



< 39.6° / 50mm | < 28.8° / 70mm | ANGLE OF VISION / LENS FOCAL LENGTH | 70mm / 28.8° > | 50mm / 39.6° >

Date and Time of baseline photograph: 16/09/2020 10:17:38

Disclaimer
 a. National Transport Authority (NTA) 2022. This drawing is confidential and the copyright in it is owned by NTA. This drawing must not be either loaned, copied or otherwise reproduced in whole or in part or used for any purpose without the prior permission of NTA.
 b. This drawing is to be used for the design element identified in the Release. Other information shown is to be considered indicative only. The drawing is to be read in conjunction with all other relevant design drawings.
 c. O.S. data used for plans are printed under © Ordnance Survey Ireland's Government of Ireland. All rights reserved. Licence Number 2022/OSI, NMA, 180 National Transport Authority. All elevations are in metres and relate to OS Geoid Model (OSGM15) Mean Head. All Co-ordinates are in Irish

Transverse Mercator Grid (ITM) as defined by OSI active local GPS station.
 d. Information concerning the position of apparatus shown on this drawing is based on drawings supplied by the utility owners and/or the utility works contractor, whilst every care has been taken in the preparation of this drawing, positions should be taken as approximate and are intended for general guidance only and no representation is made by the NTA as to the accuracy, completeness, sufficiency or otherwise of this drawing and the position of the apparatus. The information contained herein does not purport to be comprehensive or final as the apparatus is subject to being altered and/or superseded. Recipients should not rely on this information. Any liabilities are hereby expressly disclaimed.

e. The information contained herein has been provided by the NTA but does not purport to be comprehensive or final. Recipients should not rely on the information. Neither the NTA nor any of its directors, officers, employees, agents, consultants or advisers make any representation or warranty as to, or accept any liability or responsibility in relation to, the adequacy, accuracy, reasonableness or completeness of the information provided as part of this document or any matter on which the information is based (including but not limited to loss or damage arising as a result of reliance by recipients on the information or any part of it. Any liabilities are hereby expressly disclaimed.



Rev	Date	Drn	Chk'd	App'd	Description
M01	23/09/22	DS	AD	CA	ISSUE FOR PHASE 4 : PLANNING

Client
NTA
 Údarás Náisiúnta Iompair
 National Transport Authority
 Date: 23/09/2022 Scale: @ A3
 Project Code: BCIDA Originator Code: ACM

Consultant
3D DESIGN BUREAU
 Drawn: DS Checked: AD Approved: CA
 GMS Code:

Project Title: Lucan to City Centre Core Bus Corridor Scheme
 Drawing Title: Figure 17.2.2.3
 Photomontage View 02 As Existing
 View from East from south side of N4 (close to service station)
 Drawing File Reference: BCIDA-ACM-ENV_LA-0006_XX_00-DR-LL-000 Sheet Number: 12 of 37 Status: A Rev: M01



< 39.6° / 50mm | < 28.8° / 70mm | ANGLE OF VISION / LENS FOCAL LENGTH | 70mm / 28.8° > | 50mm / 39.6° >

Date and Time of baseline photograph: 16/09/2020 10:17:38

Disclaimer
 a. National Transport Authority (NTA) 2022. This drawing is confidential and the copyright in it is owned by NTA. This drawing must not be either loaned, copied or otherwise reproduced in whole or in part or used for any purpose without the prior permission of NTA.
 b. This drawing is to be used for the design element identified in the Release. Other information shown is to be considered indicative only. The drawing is to be read in conjunction with all other relevant design drawings.
 c. O.S. data used for plans are printed under © Ordnance Survey Ireland's Government of Ireland. All rights reserved. Licence Number 2022/OSS_NIMA_180 National Transport Authority. All elevations are in metres and relate to OS Geoid Model (OSGM15) Mean Head. All Co-ordinates are in Irish

Transverse Mercator Grid (ITM) as defined by OSI active local GPS station.
 d. Information concerning the position of apparatus shown on this drawing is based on drawings supplied by the utility owners and/or the utility works contractor, whilst every care has been taken in the preparation of this drawing, positions should be taken as approximate and are intended for general guidance only and no representation is made by the NTA as to the accuracy, completeness, sufficiency or otherwise of this drawing and the position of the apparatus. The information contained herein does not purport to be comprehensive or final as the apparatus is subject to being altered and/or superseded. Recipients should not rely on this information. Any liabilities are hereby expressly disclaimed.

e. The information contained herein has been provided by the NTA but does not purport to be comprehensive or final. Recipients should not rely on the information. Neither the NTA nor any of its directors, officers, employees, agents, consultants or advisers make any representation or warranty as to, or accept any liability or responsibility in relation to, the adequacy, accuracy, reasonableness or completeness of the information provided as part of this document or any matter on which the information is based (including but not limited to loss or damage arising as a result of reliance by recipients on the information or any part of it. Any liabilities are hereby expressly disclaimed.



Rev	Date	Drn	Chk'd	App'd	Description
M01	23/09/22	DS	AD	CA	ISSUE FOR PHASE 4 : PLANNING

Client
NTA
 Údarás Náisiúnta Iompair
 National Transport Authority
 Date: 23/09/2022 Scale: @ A3
 Project Code: BCIDA Originator Code: ACM

Consultant
3D DESIGN BUREAU
 Drawn: DS Checked: AD Approved: CA
 QMS Code:

Project Title: Lucan to City Centre Core Bus Corridor Scheme
 Drawing Title: Figure 17.2.2.4 Photomontage View 02 As Proposed
 View from East from south side of N4 (close to service station)
 Drawing File Reference: BCIDA-ACM-ENV_LA-0006_XX_00-DR-LL-000 Sheet Number: 13 of 37 Status: A Rev: M01



< 73.7° / 24mm | < 65.5° / 28mm | < 54.4° / 35mm | < 39.6° / 50mm | < 28.8° / 70mm | ANGLE OF VISION / LENS FOCAL LENGTH | 70mm / 28.8° > | 50mm / 39.6° > | 35mm / 54.4° > | 28mm / 65.5° > | 24mm / 73.7° > |

Date and Time of baseline photograph: 16/09/2020 10:30:50

Disclaimer
 a. National Transport Authority (NTA) 2022. This drawing is confidential and the copyright in it is owned by NTA. This drawing must not be either loaned, copied or otherwise reproduced in whole or in part or used for any purpose without the prior permission of NTA.
 b. This drawing is to be used for the design element identified in the Release. Other information shown is to be considered indicative only. The drawing is to be read in conjunction with all other relevant design drawings.
 c. O.S. data used for plans are printed under © Ordnance Survey Ireland Government of Ireland. All rights reserved. Licence Number 2022/OS_NMA_180 National Transport Authority. All elevations are in metres and relate to OS Geoid Model (OSGM15) Mean Head. All Co-ordinates are in Irish

Transverse Mercator Grid (ITM) as defined by OSI active local GPS station.
 d. Information concerning the position of apparatus shown on this drawing is based on drawings supplied by the utility owners and/or the utility works contractor, whilst every care has been taken in the preparation of this drawing, positions should be taken as approximate and are intended for general guidance only and no representation is made to the NTA as to the accuracy, completeness, sufficiency or otherwise of this drawing and the position of the apparatus. The information contained herein does not purport to be comprehensive or final as the apparatus is subject to being altered and/or superseded. Recipients should not rely on this information. Any liabilities are hereby expressly disclaimed.

e. The information contained herein has been provided by the NTA but does not purport to be comprehensive or final. Recipients should not rely on the information, neither the NTA nor any of its directors, officers, employees, agents, consultants or advisers make any representation or warranty as to, or accept any liability or responsibility in relation to, the adequacy, accuracy, reasonableness or completeness of the information provided as part of this document or any matter on which the information is based (including but not limited to loss or damage arising as a result of reliance by recipients on the information or any part of it. Any liabilities are hereby expressly disclaimed.



Rev	Date	Drn	Chk'd	App'd	Description
M01	23/09/22	DS	AD	CA	ISSUE FOR PHASE 4 : PLANNING

Client
NTA
 Údarás Náisiúnta Iompair
 National Transport Authority
 Date: 23/09/2022 Scale: @ A3
 Project Code: BCIDA Originator Code: ACM

Consultant
3D DESIGN BUREAU
 Drawn: DS Checked: AD Approved: CA
 GMS Code:

Project Title: Lucan to City Centre Core Bus Corridor Scheme
 Drawing Title: Figure 17.2.3.1 Photomontage View 03 As Existing View from West towards N4 pedestrian over bridge
 Drawing File Reference: BCIDA-ACM-ENV_LA-0006_XX_00-DR-LL-000 Sheet Number: 14 of 37 Status: A Rev: M01



< 73.7° / 24mm | < 65.5° / 28mm | < 54.4° / 35mm | < 39.6° / 50mm | < 28.8° / 70mm | ANGLE OF VISION / LENS FOCAL LENGTH | 70mm / 28.8° > | 50mm / 39.6° > | 35mm / 54.4° > | 28mm / 65.5° > | 24mm / 73.7° > |

Date and Time of baseline photograph: 16/09/2020 10:30:50

Disclaimer
 a. National Transport Authority (NTA) 2022. This drawing is confidential and the copyright in it is owned by NTA. This drawing must not be either loaned, copied or otherwise reproduced in whole or in part or used for any purpose without the prior permission of NTA.
 b. This drawing is to be used for the design element identified in the Release. Other information shown is to be considered indicative only. The drawing is to be read in conjunction with all other relevant design drawings.
 c. O.S. data used for plans are printed under © Ordnance Survey Ireland Government of Ireland. All rights reserved. Licence Number 2022/OSI_NIMA_180 National Transport Authority. All elevations are in metres and relate to OS Geoid Model (OSGM15) Mean Head. All Co-ordinates are in Irish

Transverse Mercator Grid (ITM) as defined by OSI active local GPS station.
 d. Information concerning the position of apparatus shown on this drawing is based on drawings supplied by the utility owners and/or the utility works contractor, whilst every care has been taken in the preparation of this drawing, positions should be taken as approximate and are intended for general guidance only and no representation is made to the NTA as to the accuracy, completeness, sufficiency or otherwise of this drawing and the position of the apparatus. The information contained herein does not purport to be comprehensive or final as the apparatus is subject to being altered and/or superseded. Recipients should not rely on this information. Any liabilities are hereby expressly disclaimed.

e. The information contained herein has been provided by the NTA but does not purport to be comprehensive or final. Recipients should not rely on the information. Neither the NTA nor any of its directors, officers, employees, agents, consultants or advisers make any representation or warranty as to, or accept any liability or responsibility in relation to, the adequacy, accuracy, reasonableness or completeness of the information provided as part of this document or any matter on which the information is based (including but not limited to loss or damage arising as a result of reliance by recipients on the information or any part of it. Any liabilities are hereby expressly disclaimed.



Rev	Date	Drn	Chk'd	App'd	Description
M01	23/09/22	DS	AD	CA	ISSUE FOR PHASE 4 : PLANNING

Client
NTA
 Údarás Náisiúnta Iompair
 National Transport Authority
 Date: 23/09/2022 Scale: @ A3
 Project Code: BCIDA Originator Code: ACM

Consultant
3D DESIGN BUREAU
 Drawn: DS Checked: AD Approved: CA
 GMS Code:

Project Title: Lucan to City Centre Core Bus Corridor Scheme
 Drawing Title: Figure 17.2.3.2 Photomontage View 03 As Proposed View from West towards N4 pedestrian over bridge
 Drawing File Reference: BCIDA-ACM-ENV_LA-0006_XX_00-DR-LL-000 Sheet Number: 19 of 37 Status: A Rev: M01



< 39.6° / 50mm | < 28.8° / 70mm | ANGLE OF VISION / LENS FOCAL LENGTH | 70mm / 28.8° > | 50mm / 39.6° >

Date and Time of baseline photograph: 16/09/2020 10:30:50

Disclaimer
 a. National Transport Authority (NTA) 2022. This drawing is confidential and the copyright in it is owned by NTA. This drawing must not be either loaned, copied or otherwise reproduced in whole or in part or used for any purpose without the prior permission of NTA.
 b. This drawing is to be used for the design element identified in the Block. Other information shown is to be considered indicative only. The drawing is to be read in conjunction with all other relevant design drawings.
 c. O.S. data used for plans are printed under © Ordnance Survey Ireland Government of Ireland. All rights reserved. Licence Number 2022/OSI, NMA, 180 National Transport Authority. All elevations are in metres and relate to OS Geoid Model (OSGM15) Mean Head. All Co-ordinates are in Irish

Transverse Mercator Grid (ITM) as defined by OSI active local GPS station.
 d. Information concerning the position of apparatus shown on this drawing is based on drawings supplied by the utility owners and/or the utility works contractor, whilst every care has been taken in the preparation of this drawing, positions should be taken as approximate and are intended for general guidance only and no representation is made to the NTA as to the accuracy, completeness, sufficiency or otherwise of this drawing and the position of the apparatus. The information contained herein does not purport to be comprehensive or final as the apparatus is subject to being altered and/or superseded. Recipients should not rely on this information. Any liabilities are hereby expressly disclaimed.

e. The information contained herein has been provided by the NTA but does not purport to be comprehensive or final. Recipients should not rely on the information. Neither the NTA nor any of its directors, officers, employees, agents, stakeholders or advisors make any representation or warranty as to, or accept any liability or responsibility in relation to, the adequacy, accuracy, reasonableness or completeness of the information provided as part of this document or any matter on which the information is based (including but not limited to loss or damage arising as a result of reliance by recipients on the information or any part of it. Any liabilities are hereby expressly disclaimed.




Rev	Date	Drn	Chk'd	App'd	Description
M01	23/09/22	DS	AD	CA	ISSUE FOR PHASE 4 : PLANNING

Client

 Údarás Náisiúnta Iompair
 National Transport Authority

Date: 23/09/2022
 Scale: @ A3
 Project Code: BCIDA
 Originator Code: ACM

Consultant

 3D DESIGN BUREAU

Drawn: DS
 Checked: AD
 Approved: CA

GMS Code:

Project Title: Lucan to City Centre Core Bus Corridor Scheme

Drawing Title: Figure 17.2.3.3
 Photomontage View 03 As Existing
 View from West towards N4 pedestrian over bridge

Drawing File Reference: BCIDA-ACM-ENV_LA-0006_XX_00-DR-LL-000
 Sheet Number: 16 of 37
 Status: A
 Rev: M01



< 39.6° / 50mm | < 28.8° / 70mm | ANGLE OF VISION / LENS FOCAL LENGTH | 70mm / 28.8° > | 50mm / 39.6° >

Date and Time of baseline photograph: 16/09/2020 10:30:50

Disclaimer
 a. National Transport Authority (NTA) 2022. This drawing is confidential and the copyright in it is owned by NTA. This drawing must not be either loaned, copied or otherwise reproduced in whole or in part or used for any purpose without the prior permission of NTA.
 b. This drawing is to be used for the design element identified in the Release. Other information shown is to be considered indicative only. The drawing is to be read in conjunction with all other relevant design drawings.
 c. O.S. data used for plans are printed under © Ordnance Survey Ireland Government of Ireland. All rights reserved. Licence Number 2022/OSI, NMA, 180 National Transport Authority. All elevations are in metres and relate to OS Geoid Model (OSGM15) Mean Head. All Co-ordinates are in Irish

Transverse Mercator Grid (ITM) as defined by OSI active local GPS station.
 d. Information concerning the position of apparatus shown on this drawing is based on drawings supplied by the utility owners and/or the utility works contractor, whilst every care has been taken in the preparation of this drawing, positions should be taken as approximate and are intended for general guidance only and no representation is made to the NTA as to the accuracy, completeness, sufficiency or otherwise of this drawing and the position of the apparatus. The information contained herein does not purport to be comprehensive or final as the apparatus is subject to being altered and/or superseded. Recipients should not rely on this information. Any liabilities are hereby expressly disclaimed.

e. The information contained herein has been provided by the NTA but does not purport to be comprehensive or final. Recipients should not rely on the information. Neither the NTA nor any of its directors, officers, employees, agents, stakeholders or advisers make any representation or warranty as to, or accept any liability or responsibility in relation to, the adequacy, accuracy, reasonableness or completeness of the information provided as part of this document or any matter on which the information is based (including but not limited to loss or damage arising as a result of reliance by recipients on the information or any part of it. Any liabilities are hereby expressly disclaimed.




Rev	Date	Drn	Chk'd	App'd	Description
M01	23/09/22	DS	AD	CA	ISSUE FOR PHASE 4 : PLANNING

Client

 Údarás Náisiúnta Iompair
 National Transport Authority

Date: 23/09/2022
 Project Code: BCIDA
 Scale: A3
 Originator Code: ACM

Consultant

 Drawn: DS, Checked: AD, Approved: CA
 OMS Code:

Project Title: Lucan to City Centre Core Bus Corridor Scheme

Drawing Title: Figure 17.2.3.4
 Photomontage View 03 As Proposed
 View from West towards N4 pedestrian over bridge

Drawing File Reference: BCIDA-ACM-ENV_LA-0006_XX_00-DR-LL-000
 Sheet Number: 17 of 37
 Status: A
 Rev: M01



< 73.7° / 24mm < 65.5° / 28mm < 54.4° / 35mm < 39.6° / 50mm < 28.8° / 70mm ANGLE OF VISION / LENS FOCAL LENGTH 70mm / 28.8° > 50mm / 39.6° > 35mm / 54.4° > 28mm / 65.5° > 24mm / 73.7° >

Date and Time of baseline photograph: 16/09/2020 11:06:39

Disclaimer:
 a. National Transport Authority (NTA) 2022. This drawing is confidential and the copyright in it is owned by NTA. This drawing must not be either loaned, copied or otherwise reproduced in whole or in part or used for any purpose without the prior permission of NTA.
 b. This drawing is to be used for the design element identified in the Release. Other information shown is to be considered indicative only. The drawing is to be read in conjunction with all other relevant design drawings.
 c. O.S. data used for plans are printed under © Ordnance Survey Ireland Government of Ireland. All rights reserved. Licence Number 2022/OSS, NMA, 180 National Transport Authority. All elevations are in metres and relate to OS Geoid Model (OSGM15) Mean Head. All Co-ordinates are in Irish

Transverse Mercator Grid (ITM) as defined by OSI active local GPS station.
 d. Information concerning the position of apparatus shown on this drawing is based on drawings supplied by the utility owners and/or the utility works contractor, whilst every care has been taken in the preparation of this drawing, positions should be taken as approximate and are intended for general guidance only and no representation is made to the NTA as to the accuracy, completeness, sufficiency or otherwise of this drawing and the position of the apparatus. The information contained herein does not purport to be comprehensive or final as the apparatus is subject to being altered and/or superseded. Recipients should not rely on this information. Any liabilities are hereby expressly disclaimed.

e. The information contained herein has been provided by the NTA but does not purport to be comprehensive or final. Recipients should not rely on the information, neither the NTA nor any of its directors, officers, employees, agents, stakeholders or advisors make any representation or warranty as to, or accept any liability or responsibility in relation to, the adequacy, accuracy, reasonableness or completeness of the information provided as part of this document or any matter on which the information is based (including but not limited to loss or damage arising as a result of reliance by recipients on the information or any part of it. Any liabilities are hereby expressly disclaimed.



Rev	Date	Drn	Chk'd	App'd	Description
M01	23/09/22	DS	AD	CA	ISSUE FOR PHASE 4 : PLANNING

Client: **NTA**
 Údarás Náisiúnta Iompair
 National Transport Authority

Date: 23/09/2022
 Scale: @ A3
 Project Code: BCIDA
 Originator Code: ACM

Consultant: **3D DESIGN BUREAU**

Drawn: DS
 Checked: AD
 Approved: CA

GMS Code:

Project Title: Lucan to City Centre Core Bus Corridor Scheme

Drawing Title: Figure 17.2.4.1
 Photomontage View 04 As Existing
 View from East along Old Lucan Road

Drawing File Reference: BCIDA-ACM-ENV_LA-0006_XX_00-DR-LL-000
 Sheet Number: 18 of 37
 Status: A
 Rev: M01



< 73.7° / 24mm | < 65.5° / 28mm | < 54.4° / 35mm | < 39.6° / 50mm | < 28.8° / 70mm | ANGLE OF VISION / LENS FOCAL LENGTH | 70mm / 28.8° > | 50mm / 39.6° > | 35mm / 54.4° > | 28mm / 65.5° > | 24mm / 73.7° > |

Date and Time of baseline photograph: 16/09/2020 11:06:39

Disclaimer:
 a. National Transport Authority (NTA) 2022. This drawing is confidential and the copyright in it is owned by NTA. This drawing must not be either loaned, copied or otherwise reproduced in whole or in part or used for any purpose without the prior permission of NTA.
 b. This drawing is to be used for the design element identified in the Release. Other information shown is to be considered indicative only. The drawing is to be read in conjunction with all other relevant design drawings.
 c. O.S. data used for plans are printed under © Ordnance Survey Ireland's Government of Ireland. All rights reserved. Licence Number 2022/OSS, NMA, 180 National Transport Authority. All elevations are in metres and relate to OS Grid Model (OSGM15) Mean Head. All Co-ordinates are in Irish

Transverse Mercator Grid (ITM) as defined by OSI active local GPS station.
 d. Information concerning the position of apparatus shown on this drawing is based on drawings supplied by the utility owners and/or the utility works contractor, whilst every care has been taken in the preparation of this drawing, positions should be taken as approximate and are intended for general guidance only and no representation is made to the NTA as to the accuracy, completeness, sufficiency or otherwise of this drawing and the position of the apparatus. The information contained herein does not purport to be comprehensive or final as the apparatus is subject to being altered and/or superseded. Recipients should not rely on this information. Any liabilities are hereby expressly disclaimed.

e. The information contained herein has been provided by the NTA but does not purport to be comprehensive or final. Recipients should not rely on the information, neither the NTA nor any of its directors, officers, employees, agents, stakeholders or advisers make any representation or warranty as to, or accept any liability or responsibility in relation to, the adequacy, accuracy, reasonableness or completeness of the information provided as part of this document or any matter on which the information is based (including but not limited to loss or damage arising as a result of reliance by recipients on the information or any part of it. Any liabilities are hereby expressly disclaimed.



Rev	Date	Drn	Chk'd	App'd	Description
M01	23/09/22	DS	AD	CA	ISSUE FOR PHASE 4 : PLANNING

Client
NTA
 Údarás Náisiúnta Iompair
 National Transport Authority

Date: 23/09/2022
 Scale: @ A3
 Project Code: BCIDA
 Originator Code: ACM

Consultant
3D DESIGN BUREAU

Drawn: DS
 Checked: AD
 Approved: CA

GMS Code:

Project Title: Lucan to City Centre Core Bus Corridor Scheme

Drawing Title: Figure 17.2.4.2
 Photomontage View 04 As Proposed
 View from East along Old Lucan Road

Drawing File Reference: BCIDA-ACM-ENV_LA-0006_XX_00-DR-LL-000
 Sheet Number: 19 of 37
 Status: A
 Rev: M01



< 39.6° / 50mm | < 28.8° / 70mm | ANGLE OF VISION / LENS FOCAL LENGTH | 70mm / 28.8° > | 50mm / 39.6° >

Date and Time of baseline photograph: 16/09/2020 11:06:39

Disclaimer
 a. National Transport Authority (NTA) 2022. This drawing is confidential and the copyright in it is owned by NTA. This drawing must not be either loaned, copied or otherwise reproduced in whole or in part or used for any purpose without the prior permission of NTA.
 b. This drawing is to be used for the design element identified in the Release. Other information shown is to be considered indicative only. The drawing is to be read in conjunction with all other relevant design drawings.
 c. O.S. data used for plans are printed under © Ordnance Survey Ireland Government of Ireland. All rights reserved. Licence Number 2022/OSS_NIMA_180 National Transport Authority. All elevations are in metres and relate to OS Geoid Model (OSGM15) Mean Head. All Co-ordinates are in Irish

Transverse Mercator Grid (ITM) as defined by OSI active local GPS station.
 d. Information concerning the position of apparatus shown on this drawing is based on drawings supplied by the utility owners and/or the utility works contractor, whilst every care has been taken in the preparation of this drawing, positions should be taken as approximate and are intended for general guidance only and no representation is made to the NTA as to the accuracy, completeness, sufficiency or otherwise of this drawing and the position of the apparatus. The information contained herein does not purport to be comprehensive or final as the apparatus is subject to being altered and/or superseded. Recipients should not rely on this information. Any liabilities are hereby expressly disclaimed.

e. The information contained herein has been provided by the NTA but does not purport to be comprehensive or final. Recipients should not rely on the information. Neither the NTA nor any of its directors, officers, employees, agents, stakeholders or advisors make any representation or warranty as to, or accept any liability or responsibility in relation to, the adequacy, accuracy, reasonableness or completeness of the information provided as part of this document or any matter on which the information is based (including but not limited to loss or damage arising as a result of reliance by recipients on the information or any part of it. Any liabilities are hereby expressly disclaimed.



Rev	Date	Drn	Chk'd	App'd	Description
M01	23/09/22	DS	AD	CA	ISSUE FOR PHASE 4 : PLANNING

Client
NTA
 Údarás Náisiúnta Iompair
 National Transport Authority

Date: 23/09/2022
 Project Code: BCIDA

Scale @ A3: N/A
 Originator Code: ACM

Consultant
3D DESIGN BUREAU

Drawn	Checked	Approved
DS	AD	CA

GMS Code:

Project Title: Lucan to City Centre Core Bus Corridor Scheme

Drawing Title: Figure 17.2.4.3
 Photomontage View 04 As Existing
 View from East along Old Lucan Road

Drawing File Reference: BCIDA-ACM-ENV_LA-0006_XX_00-DR-LL-000
 Sheet Number: 20 of 37
 Status: A
 Rev: M01



< 39.6° / 50mm

< 28.8° / 70mm

ANGLE OF VISION / LENS FOCAL LENGTH

70mm / 28.8° >

50mm / 39.6° >

Date and Time of baseline photograph: 16/09/2020 11:06:39

Disclaimer
 a. National Transport Authority (NTA) 2022. This drawing is confidential and the copyright in it is owned by NTA. This drawing must not be either loaned, copied or otherwise reproduced in whole or in part or used for any purpose without the prior permission of NTA.
 b. This drawing is to be used for the design element identified in the Release. Other information shown is to be considered indicative only. The drawing is to be read in conjunction with all other relevant design drawings.
 c. O.S. data used for plans are printed under © Ordnance Survey Ireland's Government of Ireland. All rights reserved. Licence Number 2022/OSS, NMA, 180 National Transport Authority. All elevations are in metres and relate to OS Grid Model (OSGM15) Mean Head. All Co-ordinates are in Irish

Transverse Mercator Grid (ITM) as defined by OSI active local GPS station.
 d. Information concerning the position of apparatus shown on this drawing is based on drawings supplied by the utility owners and/or the utility works contractor, whilst every care has been taken in the preparation of this drawing, positions should be taken as approximate and are intended for general guidance only and no representation is made to the NTA as to the accuracy, completeness, sufficiency or otherwise of this drawing and the position of the apparatus. The information contained herein does not purport to be comprehensive or final as the apparatus is subject to being altered and/or superseded. Recipients should not rely on this information. Any liabilities are hereby expressly disclaimed.

e. The information contained herein has been provided by the NTA but does not purport to be comprehensive or final. Recipients should not rely on the information. Neither the NTA nor any of its directors, officers, employees, agents, consultants or advisers make any representation or warranty as to, or accept any liability or responsibility in relation to, the adequacy, accuracy, reasonableness or completeness of the information provided as part of this document or any matter on which the information is based (including but not limited to loss or damage arising as a result of reliance by recipients on the information or any part of it. Any liabilities are hereby expressly disclaimed.




Rev	Date	Drn	Chk'd	App'd	Description
M01	23/09/22	DS	AD	CA	ISSUE FOR PHASE 4 : PLANNING

Client

 Údarás Náisiúnta Iompair
 National Transport Authority

Date: 23/09/2022
 Scale: A3
 Project Code: BCIDA
 Originator Code: ACM

Consultant

 Drawn: DS
 Checked: AD
 Approved: CA

GMS Code:

Project Title: Lucan to City Centre Core Bus Corridor Scheme

Drawing Title: Figure 17.2.4.4
 Photomontage View 04 As Proposed
 View from East along Old Lucan Road

Drawing File Reference: BCIDA-ACM-ENV_LA-0006_XX_00-DR-LL-000
 Sheet Number: 21 of 37
 Status: A
 Rev: M01



< 73.7° / 24mm | < 65.5° / 28mm | < 54.4° / 35mm | < 39.6° / 50mm | < 28.8° / 70mm | ANGLE OF VISION / LENS FOCAL LENGTH | 70mm / 28.8° > | 50mm / 39.6° > | 35mm / 54.4° > | 28mm / 65.5° > | 24mm / 73.7° > |

Date and Time of baseline photograph: 16/09/2020 11:19:33

Disclaimer
 a. National Transport Authority (NTA) 2022. This drawing is confidential and the copyright in it is owned by NTA. This drawing must not be either loaned, copied or otherwise reproduced in whole or in part or used for any purpose without the prior permission of NTA.
 b. This drawing is to be used for the design element identified in the Release. Other information shown is to be considered indicative only. The drawing is to be read in conjunction with all other relevant design drawings.
 c. O.S. data used for plans are printed under © Ordnance Survey Ireland's Government of Ireland. All rights reserved. Licence Number 2022/OSS_NMA_180 National Transport Authority. All elevations are in metres and relate to OSG (Geoid Model (OSGM15) Mean Head. All Co-ordinates are in Irish

Transverse Mercator Grid (ITM) as defined by OSI active local GPS station.
 d. Information concerning the position of apparatus shown on this drawing is based on drawings supplied by the utility owners and/or the utility works contractor, whilst every care has been taken in the preparation of this drawing, positions should be taken as approximate and are intended for general guidance only and no representation is made by the NTA as to the accuracy, completeness, sufficiency or otherwise of this drawing and the position of the apparatus. The information contained herein does not purport to be comprehensive or final as the apparatus is subject to being altered and/or superseded. Recipients should not rely on this information. Any liabilities are hereby expressly disclaimed.

e. The information contained herein has been provided by the NTA but does not purport to be comprehensive or final. Recipients should not rely on the information. Neither the NTA nor any of its directors, officers, employees, agents, stakeholders or advisors make any representation or warranty as to, or accept any liability or responsibility in relation to, the adequacy, accuracy, reasonableness or completeness of the information provided as part of this document or any matter on which the information is based (including but not limited to loss or damage arising as a result of reliance by recipients on the information or any part of it. Any liabilities are hereby expressly disclaimed.




Rev	Date	Drn	Chk'd	App'd	Description
M01	23/09/22	DS	AD	CA	ISSUE FOR PHASE 4 : PLANNING

Client

 Údarás Náisiúnta Iompair
 National Transport Authority

Date: 23/09/2022
 Scale: @ A3
 Project Code: BCIDA
 Originator Code: ACM

Consultant

 3D DESIGN BUREAU

Drawn: DS
 Checked: AD
 Approved: CA

GMS Code:

Project Title: Lucan to City Centre Core Bus Corridor Scheme

Drawing Title: Figure 17.2.5.1
 Photomontage View 05 As Existing
 View from East from Liffey Valley

Drawing File Reference: BCIDA-ACM-ENV_LA-0006_XX_00-DR-LL-000
 Sheet Number: 22 of 37
 Status: A
 Rev: M01



< 73.7° / 24mm | < 65.5° / 28mm | < 54.4° / 35mm | < 39.6° / 50mm | < 28.8° / 70mm | ANGLE OF VISION / LENS FOCAL LENGTH | 70mm / 28.8° > | 50mm / 39.6° > | 35mm / 54.4° > | 28mm / 65.5° > | 24mm / 73.7° > |

Date and Time of baseline photograph: 16/09/2020 11:19:33

Disclaimer
 a. National Transport Authority (NTA) 2022. This drawing is confidential and the copyright in it is owned by NTA. This drawing must not be either loaned, copied or otherwise reproduced in whole or in part or used for any purpose without the prior permission of NTA.
 b. This drawing is to be used for the design element identified in the Release. Other information shown is to be considered indicative only. The drawing is to be read in conjunction with all other relevant design drawings.
 c. O.S. data used for plans are printed under © Ordnance Survey Ireland Government of Ireland. All rights reserved. Licence Number 2022/OSI, NMA, 180 National Transport Authority. All elevations are in metres and relate to OS Grid Model (OSGM15) Mean Head. All Co-ordinates are in Irish

Transverse Mercator Grid (ITM) as defined by OSI active local GPS station.
 d. Information concerning the position of apparatus shown on this drawing is based on drawings supplied by the utility owners and/or the utility works contractor, whilst every care has been taken in the preparation of this drawing, positions should be taken as approximate and are intended for general guidance only and no representation is made by the NTA as to the accuracy, completeness, sufficiency or otherwise of this drawing and the position of the apparatus. The information contained herein does not purport to be comprehensive or final as the apparatus is subject to being altered and/or superseded. Recipients should not rely on this information. Any liabilities are hereby expressly disclaimed.

e. The information contained herein has been provided by the NTA but does not purport to be comprehensive or final. Recipients should not rely on the information. Neither the NTA nor any of its directors, officers, employees, agents, consultants or advisers make any representation or warranty as to, or accept any liability or responsibility in relation to, the adequacy, accuracy, reasonableness or completeness of the information provided as part of this document or any matter on which the information is based (including but not limited to loss or damage arising as a result of reliance by recipients on the information or any part of it. Any liabilities are hereby expressly disclaimed.



Rev	Date	Drn	Chk'd	App'd	Description
M01	23/09/22	DS	AD	CA	ISSUE FOR PHASE 4 : PLANNING

Client
NTA
 Údarás Náisiúnta Iompair
 National Transport Authority

Date: 23/09/2022
 Project Code: BCIDA

Scale @ A3: N/A
 Originator Code: ACM

Consultant
3D DESIGN BUREAU

Drawn: DS
 Checked: AD
 Approved: CA

GMS Code:

Project Title: Lucan to City Centre Core Bus Corridor Scheme

Drawing Title: Figure 17.2.5.2
 Photomontage View 05 As Proposed
 View from East from Liffey Valley

Drawing File Reference: BCIDA-ACM-ENV_LA-0006_XX_00-DR-LL-000
 Sheet Number: 23 of 37
 Status: A
 Rev: M01



< 39.6° / 50mm | < 28.8° / 70mm | ANGLE OF VISION / LENS FOCAL LENGTH | 70mm / 28.8° > | 50mm / 39.6° >

Date and Time of baseline photograph: 16/09/2020 11:19:33

Disclaimer
 a. National Transport Authority (NTA) 2022. This drawing is confidential and the copyright in it is owned by NTA. This drawing must not be either loaned, copied or otherwise reproduced in whole or in part or used for any purpose without the prior permission of NTA.
 b. This drawing is to be used for the design element identified in the Block. Other information shown is to be considered indicative only. The drawing is to be read in conjunction with all other relevant design drawings.
 c. O.S. data used for plans are printed under © Ordnance Survey Ireland Government of Ireland. All rights reserved. Licence Number 2022/O.S./NMA_180 National Transport Authority. All elevations are in metres and relate to OSG (Geoid Model (OSGM15) Mean Head. All Co-ordinates are in Irish

Transverse Mercator Grid (ITM) as defined by OSI active local GPS station.
 d. Information concerning the position of apparatus shown on this drawing is based on drawings supplied by the utility owners and/or the utility works contractor, whilst every care has been taken in the preparation of this drawing, positions should be taken as approximate and are intended for general guidance only and no representation is made to the NTA as to the accuracy, completeness, sufficiency or otherwise of this drawing and the position of the apparatus. The information contained herein does not purport to be comprehensive or final as the apparatus is subject to being altered and/or superseded. Recipients should not rely on this information. Any liabilities are hereby expressly disclaimed.

e. The information contained herein has been provided by the NTA but does not purport to be comprehensive or final. Recipients should not rely on the information. Neither the NTA nor any of its directors, officers, employees, agents, consultants or advisers make any representation or warranty as to, or accept any liability or responsibility in relation to, the adequacy, accuracy, reasonableness or completeness of the information provided as part of this document or any matter on which the information is based (including but not limited to loss or damage arising as a result of reliance by recipients on the information or any part of it. Any liabilities are hereby expressly disclaimed.



Rev	Date	Drn	Chkd	App'd	Description
M01	23/09/22	DS	AD	CA	ISSUE FOR PHASE 4 : PLANNING

Client
NTA
 Údarás Náisiúnta Iompair
 National Transport Authority

Date: 23/09/2022
 Scale: @ A3
 N/A

Project Code: BCIDA
 Originator Code: ACM

Consultant
3D DESIGN BUREAU

Drawn	DS	Checked	AD	Approved	CA
-------	----	---------	----	----------	----

GMS Code:

Project Title
 Lucan to City Centre Core Bus Corridor Scheme

Drawing Title
 Figure 17.2.5.3
 Photomontage View 05 As Existing
 View from East from Liffey Valley

Drawing File Reference: BCIDA-ACM-ENV_LA-0006_XX_00-DR-LL-000
 Sheet Number: 24 of 37
 Status: A
 Rev: M01



< 39.6° / 50mm

< 28.8° / 70mm

ANGLE OF VISION / LENS FOCAL LENGTH

70mm / 28.8° >

50mm / 39.6° >

Date and Time of baseline photograph: 16/09/2020 11:19:33

Disclaimer
 a. National Transport Authority (NTA) 2022. This drawing is confidential and the copyright in it is owned by NTA. This drawing must not be either loaned, copied or otherwise reproduced in whole or in part or used for any purpose without the prior permission of NTA.
 b. This drawing is to be used for the design element identified in the Blockset. Other information shown is to be considered indicative only. The drawing is to be read in conjunction with all other relevant design drawings.
 c. O.S. data used for plans are printed under © Ordnance Survey Ireland Government of Ireland. All rights reserved. Licence Number 2022/OSS_NIMA_180 National Transport Authority. All elevations are in metres and relate to OSG (Geoid Model (OSGM15) Mean Head. All Co-ordinates are in Irish

Transverse Mercator Grid (ITM) as defined by OSI active local GPS station.
 d. Information concerning the position of apparatus shown on this drawing is based on drawings supplied by the utility owners and/or the utility works contractor, whilst every care has been taken in the preparation of this drawing, positions should be taken as approximate and are intended for general guidance only and no representation is made to the NTA as to the accuracy, completeness, sufficiency or otherwise of this drawing and the position of the apparatus. The information contained herein does not purport to be comprehensive or final as the apparatus is subject to being altered and/or superseded. Recipients should not rely on this information. Any liabilities are hereby expressly disclaimed.

e. The information contained herein has been provided by the NTA but does not purport to be comprehensive or final. Recipients should not rely on the information. Neither the NTA nor any of its directors, officers, employees, agents, consultants or advisers make any representation or warranty as to, or accept any liability or responsibility in relation to, the adequacy, accuracy, reasonableness or completeness of the information provided as part of this document or any matter on which the information is based (including but not limited to loss or damage arising as a result of reliance by recipients on the information or any part of it. Any liabilities are hereby expressly disclaimed.



Rev	Date	Drn	Chkd	App'd	Description
M01	23/09/22	DS	AD	CA	ISSUE FOR PHASE 4 : PLANNING

Client
NTA
 Údarás Náisiúnta Iompair
 National Transport Authority
 Date: 23/09/2022 Scale: A3
 Project Code: BCIDA Originator Code: ACM

Consultant
3D DESIGN BUREAU
 Drawn: DS Checked: AD Approved: CA
 OMS Code:

Project Title: Lucan to City Centre Core Bus Corridor Scheme
 Drawing Title: Figure 17.2.5.4 Photomontage View 05 As Proposed View from East from Liffey Valley
 Drawing File Reference: BCIDA-ACM-ENV_LA-0006_XX_00-DR-LL-000 Sheet Number: 25 of 37 Status: A Rev: M01



< 73.7° / 24mm | < 65.5° / 28mm | < 54.4° / 35mm | < 39.6° / 50mm | < 28.8° / 70mm | ANGLE OF VISION / LENS FOCAL LENGTH | 70mm / 28.8° > | 50mm / 39.6° > | 35mm / 54.4° > | 28mm / 65.5° > | 24mm / 73.7° > |

Date and Time of baseline photograph: 16/09/2020 13:50:04

Disclaimer
 a. National Transport Authority (NTA) 2022. This drawing is confidential and the copyright in it is owned by NTA. This drawing must not be either loaned, copied or otherwise reproduced in whole or in part or used for any purpose without the prior permission of NTA.
 b. This drawing is to be used for the design element identified in the Release. Other information shown is to be considered indicative only. The drawing is to be read in conjunction with all other relevant design drawings.
 c. O.S. data used for plans are printed under © Ordnance Survey Ireland Government of Ireland. All rights reserved. Licence Number 2022/OSS_NIMA_180 National Transport Authority. All elevations are in metres and relate to OS Geoid Model (OSGM15) Mean Head. All Co-ordinates are in Irish

Transverse Mercator Grid (ITM) as defined by OSI active local GPS station.
 d. Information concerning the position of apparatus shown on this drawing is based on drawings supplied by the utility owners and/or the utility works contractor, whilst every care has been taken in the preparation of this drawing, positions should be taken as approximate and are intended for general guidance only and no representation is made by the NTA as to the accuracy, completeness, sufficiency or otherwise of this drawing and the position of the apparatus. The information contained herein does not purport to be comprehensive or final as the apparatus is subject to being altered and/or superseded. Recipients should not rely on this information. Any liabilities are hereby expressly disclaimed.

e. The information contained herein has been provided by the NTA but does not purport to be comprehensive or final. Recipients should not rely on the information. Neither the NTA nor any of its directors, officers, employees, agents, consultants or advisers make any representation or warranty as to, or accept any liability or responsibility in relation to, the accuracy, completeness, sufficiency or otherwise of the information provided as part of this document or any matter on which the information is based (including but not limited to loss or damage arising as a result of reliance on the information or any part of it. Any liabilities are hereby expressly disclaimed.



Rev	Date	Drn	Chk'd	App'd	Description
M01	23/09/22	DS	AD	CA	ISSUE FOR PHASE 4 : PLANNING

Client
NTA
 Údarás Náisiúnta Iompair
 National Transport Authority

Date: 23/09/2022
 Scale: @ A3
 Project Code: BCIDA
 Originator Code: ACM

Consultant
3D DESIGN BUREAU

Drawn	DS	Checked	AD	Approved	CA
-------	----	---------	----	----------	----

GMS Code:

Project Title: Lucan to City Centre Core Bus Corridor Scheme

Drawing Title: Figure 17.2.6.1
 Photomontage View 06 As Existing
 View from North from Victoria Quay

Drawing File Reference: BCIDA-ACM-ENV_LA-0006_XX_00-DR-LL-000
 Sheet Number: 28 of 37
 Status: A
 Rev: M01



< 73.7° / 24mm | < 65.5° / 28mm | < 54.4° / 35mm | < 39.6° / 50mm | < 28.8° / 70mm | ANGLE OF VISION / LENS FOCAL LENGTH | 70mm / 28.8° > | 50mm / 39.6° > | 35mm / 54.4° > | 28mm / 65.5° > | 24mm / 73.7° > |

Date and Time of baseline photograph: 16/09/2020 13:50:04

Disclaimer
 a. National Transport Authority (NTA) 2022. This drawing is confidential and the copyright in it is owned by NTA. This drawing must not be either loaned, copied or otherwise reproduced in whole or in part or used for any purpose without the prior permission of NTA.
 b. This drawing is to be used for the design element identified in the Release. Other information shown is to be considered indicative only. The drawing is to be read in conjunction with all other relevant design drawings.
 c. O.S. data used for plans are printed under © Ordnance Survey Ireland Government of Ireland. All rights reserved. Licence Number 2022/OSS_NIMA_180 National Transport Authority. All elevations are in metres and relate to OS Geoid Model (OSGM15) Mean Head. All Co-ordinates are in Irish

Transverse Mercator Grid (ITM) as defined by OSI active local GPS station.
 d. Information concerning the position of apparatus shown on this drawing is based on drawings supplied by the utility owners and/or the utility works contractor, whilst every care has been taken in the preparation of this drawing, positions should be taken as approximate and are intended for general guidance only and no representation is made by the NTA as to the accuracy, completeness, sufficiency or otherwise of this drawing and the position of the apparatus. The information contained herein does not purport to be comprehensive or final as the apparatus is subject to being altered and/or superseded. Recipients should not rely on this information. Any liabilities are hereby expressly disclaimed.

e. The information contained herein has been provided by the NTA but does not purport to be comprehensive or final. Recipients should not rely on the information. Neither the NTA nor any of its directors, officers, employees, agents, stakeholders or advisers make any representation or warranty as to, or accept any liability or responsibility in relation to, the adequacy, accuracy, reasonableness or completeness of the information provided as part of this document or any matter on which the information is based (including but not limited to loss or damage arising as a result of reliance by recipients on the information or any part of it. Any liabilities are hereby expressly disclaimed.



Rev	Date	Drn	Chk'd	App'd	Description
M01	23/09/22	DS	AD	CA	ISSUE FOR PHASE 4 : PLANNING

Client
NTA
 Údarás Náisiúnta Iompair
 National Transport Authority

Date: 23/09/2022
 Scale: @ A3
 Project Code: BCIDA
 Originator Code: ACM

Consultant
3D DESIGN BUREAU

Drawn	Checked	Approved
DS	AD	CA

GMS Code:

Project Title	
Lucan to City Centre Core Bus Corridor Scheme	
Drawing Title	
Figure 17.2.6.2 Photomontage View 06 As Proposed View from North from Victoria Quay	
Drawing File Reference: BCIDA-ACM-ENV_LA-0006_XX_00-DR-LL-000	Sheet Number: 27 of 37
Status: A	Rev: M01



< 39.6° / 50mm | < 28.8° / 70mm ANGLE OF VISION / LENS FOCAL LENGTH 70mm / 28.8° > | 50mm / 39.6° >

Date and Time of baseline photograph: 16/09/2020 13:50:04

Disclaimer
 a. National Transport Authority (NTA) 2022. This drawing is confidential and the copyright in it is owned by NTA. This drawing must not be either loaned, copied or otherwise reproduced in whole or in part or used for any purpose without the prior permission of NTA.
 b. This drawing is to be used for the design element identified in the Block. Other information shown is to be considered indicative only. The drawing is to be read in conjunction with all other relevant design drawings.
 c. O.S. data used for plans are printed under © Ordnance Survey Ireland Government of Ireland. All rights reserved. Licence Number 2022/OSI, NMA, 180 National Transport Authority. All elevations are in metres and relate to OS Geoid Model (OSGM15) Mean Head. All Co-ordinates are in Irish

Transverse Mercator Grid (ITM) as defined by OSI active local GPS station.
 d. Information concerning the position of apparatus shown on this drawing is based on drawings supplied by the utility owners and/or the utility works contractor, whilst every care has been taken in the preparation of this drawing, positions should be taken as approximate and are intended for general guidance only and no representation is made to the NTA as to the accuracy, completeness, sufficiency or otherwise of this drawing and the position of the apparatus. The information contained herein does not purport to be comprehensive or final as the apparatus is subject to being altered and/or superseded. Recipients should not rely on this information. Any liabilities are hereby expressly disclaimed.

e. The information contained herein has been provided by the NTA but does not purport to be comprehensive or final. Recipients should not rely on the information. Neither the NTA nor any of its directors, officers, employees, agents, consultants or advisers make any representation or warranty as to, or accept any liability or responsibility in relation to, the adequacy, accuracy, reasonableness or completeness of the information provided as part of this document or any matter on which the information is based (including but not limited to loss or damage arising as a result of reliance by recipients on the information or any part of it. Any liabilities are hereby expressly disclaimed.



Rev	Date	Drn	Chk'd	App'd	Description
M01	23/09/22	DS	AD	CA	ISSUE FOR PHASE 4 : PLANNING

Client
NTA
 Údarás Náisiúnta Iompair
 National Transport Authority
 Date: 23/09/2022
 Scale: @ A3
 Project Code: BCIDA
 Originator Code: ACM

Consultant
3D DESIGN BUREAU
 Drawn: DS
 Checked: AD
 Approved: CA
 OMS Code:

Project Title: Lucan to City Centre Core Bus Corridor Scheme
 Drawing Title: Figure 17.2.6.3
 Photomontage View 06 As Existing
 View from North from Victoria Quay
 Drawing File Reference: BCIDA-ACM-ENV_LA-0006_XX_00-DR-LL-000
 Sheet Number: 28 of 37
 Status: A
 Rev: M01



< 39.6° / 50mm | < 28.8° / 70mm | ANGLE OF VISION / LENS FOCAL LENGTH | 70mm / 28.8° > | 50mm / 39.6° >

Date and Time of baseline photograph: 16/09/2020 13:50:04

Disclaimer
 a. National Transport Authority (NTA) 2022. This drawing is confidential and the copyright in it is owned by NTA. This drawing must not be either loaned, copied or otherwise reproduced in whole or in part or used for any purpose without the prior permission of NTA.
 b. This drawing is to be used for the design element identified in the Release. Other information shown is to be considered indicative only. The drawing is to be read in conjunction with all other relevant design drawings.
 c. O.S. data used for plans are printed under © Ordnance Survey Ireland Government of Ireland. All rights reserved. Licence Number 2022/OSI_NIMA_180 National Transport Authority. All elevations are in metres and relate to OS Geoid Model (OSGM15) Mean Head. All Co-ordinates are in Irish

Transverse Mercator Grid (ITM) as defined by OSI active local GPS station.
 d. Information concerning the position of apparatus shown on this drawing is based on drawings supplied by the utility owners and the utility works contractor, whilst every care has been taken in the preparation of this drawing, positions should be taken as approximate and are intended for general guidance only and no representation is made to the NTA as to the accuracy, completeness, sufficiency or otherwise of this drawing and the position of the apparatus. The information contained herein does not purport to be comprehensive or final as the apparatus is subject to being altered and/or superseded. Recipients should not rely on this information. Any liabilities are hereby expressly disclaimed.

e. The information contained herein has been provided by the NTA but does not purport to be comprehensive or final. Recipients should not rely on the information. Neither the NTA nor any of its directors, officers, employees, agents, consultants or advisers make any representation or warranty as to, or accept any liability or responsibility in relation to, the adequacy, accuracy, reasonableness or completeness of the information provided as part of this document or any matter on which the information is based (including but not limited to loss or damage arising as a result of reliance by recipients on the information or any part of it. Any liabilities are hereby expressly disclaimed.



Rev	Date	Drn	Chk'd	App'd	Description
M01	23/09/22	DS	AD	CA	ISSUE FOR PHASE 4 : PLANNING

Client
NTA
 Údarás Náisiúnta Iompair
 National Transport Authority
 Date: 23/09/2022
 Scale: @ A3
 Project Code: BCIDA
 Originator Code: ACM

Consultant
3D DESIGN BUREAU
 Drawn: DS
 Checked: AD
 Approved: CA
 OMS Code:

Project Title: Lucan to City Centre Core Bus Corridor Scheme
 Drawing Title: Figure 17.2.6.4 Photomontage View 06 As Proposed View from North from Victoria Quay
 Drawing File Reference: BCIDA-ACM-ENV_LA-0006_XX_00-DR-LL-000
 Sheet Number: 29 of 37
 Status: A
 Rev: M01



< 73.7° / 24mm | < 65.5° / 28mm | < 54.4° / 35mm | < 39.6° / 50mm | < 28.8° / 70mm | ANGLE OF VISION / LENS FOCAL LENGTH | 70mm / 28.8° > | 50mm / 39.6° > | 35mm / 54.4° > | 28mm / 65.5° > | 24mm / 73.7° > |

Date and Time of baseline photograph: 18/11/2020 16:03:27

Disclaimer
 a. National Transport Authority (NTA) 2022. This drawing is confidential and the copyright in it is owned by NTA. This drawing must not be either loaned, copied or otherwise reproduced in whole or in part or used for any purpose without the prior permission of NTA.
 b. This drawing is to be used for the design element identified in the Release. Other information shown is to be considered indicative only. The drawing is to be read in conjunction with all other relevant design drawings.
 c. O.S. data used for plans are printed under © Ordnance Survey Ireland's Government of Ireland. All rights reserved. Licence Number 2022/OSS_NMA_180 National Transport Authority. All elevations are in metres and relate to OS Geoid Model (OSGM15) Mean Head. All Co-ordinates are in Irish

Transverse Mercator Grid (ITM) as defined by OSI active local GPS station.
 d. Information concerning the position of apparatus shown on this drawing is based on drawings supplied by the utility owners and/or the utility works contractor, whilst every care has been taken in the preparation of this drawing, positions should be taken as approximate and are intended for general guidance only and no representation is made to the NTA as to the accuracy, completeness, sufficiency or otherwise of this drawing and the position of the apparatus. The information contained herein does not purport to be comprehensive or final as the apparatus is subject to being altered and/or superseded. Recipients should not rely on this information. Any liabilities are hereby expressly disclaimed.

e. The information contained herein has been provided by the NTA but does not purport to be comprehensive or final. Recipients should not rely on the information. Neither the NTA nor any of its directors, officers, employees, agents, consultants or advisers make any representation or warranty as to, or accept any liability or responsibility in relation to, the adequacy, accuracy, reasonableness or completeness of the information provided as part of this document or any matter on which the information is based (including but not limited to loss or damage arising as a result of reliance by recipients on the information or any part of it. Any liabilities are hereby expressly disclaimed.



Rev	Date	Drn	Chk'd	App'd	Description
M01	23/09/22	DS	AD	CA	ISSUE FOR PHASE 4 : PLANNING

Client
NTA
 Údarás Náisiúnta Iompair
 National Transport Authority

Date: 23/09/2022
 Scale: @ A3
 N/A

Project Code: BCIDA
 Originator Code: ACM

Consultant
3D DESIGN BUREAU

Drawn	Checked	Approved
DS	AD	CA

GMS Code:

Project Title
 Lucan to City Centre Core Bus Corridor Scheme

Drawing Title
 Figure 17.2.7.1
 Photomontage View 07 As Existing

View from North across St. John's Road towards north elevation of Dr. Steevens' Hospital

Drawing File Reference: BCIDA-ACM-ENV_LA-0006_XX_00-DR-LL-000
 Sheet Number: 30 of 37
 Status: A
 Rev: M01



< 73.7° / 24mm | < 65.5° / 28mm | < 54.4° / 35mm | < 39.6° / 50mm | < 28.8° / 70mm | ANGLE OF VISION / LENS FOCAL LENGTH | 70mm / 28.8° > | 50mm / 39.6° > | 35mm / 54.4° > | 28mm / 65.5° > | 24mm / 73.7° > |

Date and Time of baseline photograph: 18/11/2020 16:03:27

<p>Disclaimer</p> <p>a. National Transport Authority (NTA) 2022. This drawing is confidential and the copyright in it is owned by NTA. This drawing must not be either loaned, copied or otherwise reproduced in whole or in part or used for any purpose without the prior permission of NTA.</p> <p>b. This drawing is to be used for the design element identified in the Release. Other information shown is to be considered indicative only. The drawing is to be read in conjunction with all other relevant design drawings.</p> <p>c. O.S. data used for plans are printed under © Ordnance Survey Ireland's Government of Ireland. All rights reserved. Licence Number 2022/OSS, NMA, 180 National Transport Authority. All elevations are in metres and relate to OS Geoid Model (OSGM15) Mean Head. All Co-ordinates are in Irish Transverse Mercator Grid (ITM) as defined by OSI active local GPS station.</p> <p>d. Information concerning the position of apparatus shown on this drawing is based on drawings supplied by the utility owners and/or the utility works contractor, whilst every care has been taken in the preparation of this drawing, positions should be taken as approximate and are intended for general guidance only and no representation is made by the NTA as to the accuracy, completeness, sufficiency or otherwise of this drawing and the position of the apparatus. The information contained herein does not purport to be comprehensive or final as the apparatus is subject to being altered and/or superseded. Recipients should not rely on this information. Any liabilities are hereby expressly disclaimed.</p> <p>e. The information contained herein has been provided by the NTA but does not purport to be comprehensive or final. Recipients should not rely on the information. Neither the NTA nor any of its directors, officers, employees, agents, consultants or advisers make any representation or warranty as to, or accept any liability or responsibility in relation to, the adequacy, accuracy, reasonableness or completeness of the information provided as part of this document or any matter on which the information is based (including but not limited to loss or damage arising as a result of reliance by recipients on the information or any part of it. Any liabilities are hereby expressly disclaimed.</p>		<table border="1"> <thead> <tr> <th>Rev</th> <th>Date</th> <th>Drn</th> <th>Chk'd</th> <th>App'd</th> <th>Description</th> </tr> </thead> <tbody> <tr> <td>M01</td> <td>23/09/22</td> <td>DS</td> <td>AD</td> <td>CA</td> <td>ISSUE FOR PHASE 4 : PLANNING</td> </tr> </tbody> </table>	Rev	Date	Drn	Chk'd	App'd	Description	M01	23/09/22	DS	AD	CA	ISSUE FOR PHASE 4 : PLANNING	<p>Client</p> <p>Údarás Náisiúnta Iompair National Transport Authority</p>	<p>Consultant</p>	<p>Project Title</p> <p>Lucan to City Centre Core Bus Corridor Scheme</p>
		Rev	Date	Drn	Chk'd	App'd	Description										
M01	23/09/22	DS	AD	CA	ISSUE FOR PHASE 4 : PLANNING												
<p>Date</p> <p>23/09/2022</p> <p>Project Code</p> <p>BCIDA</p>	<p>Scale</p> <p>@ A3</p> <p>N/A</p> <p>Originator Code</p> <p>ACM</p>	<table border="1"> <thead> <tr> <th>Drawn</th> <th>DS</th> <th>Checked</th> <th>AD</th> <th>Approved</th> <th>CA</th> </tr> </thead> <tbody> <tr> <td></td> <td></td> <td></td> <td></td> <td></td> <td></td> </tr> </tbody> </table> <p>GMS Code:</p>	Drawn	DS	Checked	AD	Approved	CA							<p>Drawing Title</p> <p>Figure 17.2.7.2 Photomontage View 07 As Proposed</p> <p>View from North across St. John's Road towards north elevation of Dr. Steevens' Hospital</p> <p>Drawing File Reference: BCIDA-ACM-ENV_LA-0006_XX_00-DR-LL-000</p> <p>Sheet Number: 31 of 37</p> <p>Status: A</p> <p>Rev: M01</p>		
Drawn	DS	Checked	AD	Approved	CA												



< 39.6° / 50mm

| < 28.8° / 70mm

ANGLE OF VISION / LENS FOCAL LENGTH

70mm / 28.8° >

| 50mm / 39.6° >

Date and Time of baseline photograph: 18/11/2020 16:03:27

Disclaimer
 a. National Transport Authority (NTA) 2022. This drawing is confidential and the copyright in it is owned by NTA. This drawing must not be either loaned, copied or otherwise reproduced in whole or in part or used for any purpose without the prior permission of NTA.
 b. This drawing is to be used for the design element identified in the Block. Other information shown is to be considered indicative only. The drawing is to be read in conjunction with all other relevant design drawings.
 c. O.S. data used for plans are printed under © Ordnance Survey Ireland Government of Ireland. All rights reserved. Licence Number 2022/O.S./NMA_180 National Transport Authority. All elevations are in metres and relate to OSG Grid Model (OSGM15) Mean Head. All Co-ordinates are in Irish

Transverse Mercator Grid (ITM) as defined by OSI active local GPS station.
 d. Information concerning the position of apparatus shown on this drawing is based on drawings supplied by the utility owners and/or the utility works contractor, whilst every care has been taken in the preparation of this drawing, positions should be taken as approximate and are intended for general guidance only and no representation is made to the NTA as to the accuracy, completeness, sufficiency or otherwise of this drawing and the position of the apparatus. The information contained herein does not purport to be comprehensive or final as the apparatus is subject to being altered and/or superseded. Recipients should not rely on this information. Any liabilities are hereby expressly disclaimed.

e. The information contained herein has been provided by the NTA but does not purport to be comprehensive or final. Recipients should not rely on the information. Neither the NTA nor any of its directors, officers, employees, agents, consultants or advisers make any representation or warranty as to, or accept any liability or responsibility in relation to, the adequacy, accuracy, reasonableness or completeness of the information provided as part of this document or any matter on which the information is based (including but not limited to loss or damage arising as a result of reliance by recipients on the information or any part of it. Any liabilities are hereby expressly disclaimed.



Rev	Date	Drn	Chk'd	App'd	Description
M01	23/09/22	DS	AD	CA	ISSUE FOR PHASE 4 : PLANNING

Client
NTA
 Údarás Náisiúnta Iompair
 National Transport Authority

Date
 23/09/2022

Project Code
 BCIDA

Scale @ A3
 N/A

Originator Code
 ACM

Consultant
3D DESIGN BUREAU

Drawn	Checked	Approved
DS	AD	CA

GMS Code:

Project Title
 Lucan to City Centre Core Bus Corridor Scheme

Drawing Title
 Figure 17.2.7.3
 Photomontage View 07 As Existing

View from North across St. John's Road towards north elevation of Dr. Steevens' Hospital

Drawing File Reference
 BCIDA-ACM-ENV_LA-0006_XX_00-DR-LL-000

Sheet Number
 32 of 37

Status
 A

Rev
 M01



< 39.6° / 50mm

| < 28.8° / 70mm

ANGLE OF VISION / LENS FOCAL LENGTH

70mm / 28.8° >

| 50mm / 39.6° >

Date and Time of baseline photograph: 18/11/2020 16:03:27

Disclaimer
 a. National Transport Authority (NTA) 2022. This drawing is confidential and the copyright in it is owned by NTA. This drawing must not be either loaned, copied or otherwise reproduced in whole or in part or used for any purpose without the prior permission of NTA.
 b. This drawing is to be used for the design element identified in the Release. Other information shown is to be considered indicative only. The drawing is to be read in conjunction with all other relevant design drawings.
 c. O.S. data used for plans are printed under © Ordnance Survey Ireland Government of Ireland. All rights reserved. Licence Number 2022/OSS_NIMA_180 National Transport Authority. All elevations are in metres and relate to OS Geoid Model (OSGM15) Mean Head. All Co-ordinates are in Irish

Transverse Mercator Grid (ITM) as defined by OSI active local GPS station.
 d. Information concerning the position of apparatus shown on this drawing is based on drawings supplied by the utility owners and/or the utility works contractor. Whilst every care has been taken in the preparation of this drawing, positions should be taken as approximate and are intended for general guidance only and no representation is made to the NTA as to the accuracy, completeness, sufficiency or otherwise of this drawing and the position of the apparatus. The information contained herein does not purport to be comprehensive or final as the apparatus is subject to being altered and/or superseded. Recipients should not rely on this information. Any liabilities are hereby expressly disclaimed.

e. The information contained herein has been provided by the NTA but does not purport to be comprehensive or final. Recipients should not rely on the information. Neither the NTA nor any of its directors, officers, employees, agents, consultants or advisers make any representation or warranty as to, or accept any liability or responsibility in relation to, the adequacy, accuracy, reasonableness or completeness of the information provided as part of this document or any matter on which the information is based (including but not limited to loss or damage arising as a result of reliance by recipients on the information or any part of it. Any liabilities are hereby expressly disclaimed.



Rev	Date	Drn	Chk'd	App'd	Description
M01	23/09/22	DS	AD	CA	ISSUE FOR PHASE 4 : PLANNING

Client
NTA
 Údarás Náisiúnta Iompair
 National Transport Authority
 Date: 23/09/2022 Scale @ A3: N/A
 Project Code: BCIDA Originator Code: ACM

Consultant
3D DESIGN BUREAU
 Drawn: DS Checked: AD Approved: CA
 OMS Code:

Project Title: Lucan to City Centre Core Bus Corridor Scheme
 Drawing Title: Figure 17.2.7.4 Photomontage View 07 As Proposed
 View from North across St. John's Road towards north elevation of Dr. Stevens' Hospital
 Drawing File Reference: BCIDA-ACM-ENV_LA-0006_XX_00-DR-LL-000 Sheet Number: 33 of 37 Status: A Rev: M01



< 73.7° / 24mm | < 65.5° / 28mm | < 54.4° / 35mm | < 39.6° / 50mm | < 28.8° / 70mm | ANGLE OF VISION / LENS FOCAL LENGTH | 70mm / 28.8° > | 50mm / 39.6° > | 35mm / 54.4° > | 28mm / 65.5° > | 24mm / 73.7° > |

Date and Time of baseline photograph: 18/11/2020 16:59:35

<p>Disclaimer:</p> <p>a. National Transport Authority (NTA) 2022. This drawing is confidential and the copyright in it is owned by NTA. This drawing must not be either loaned, copied or otherwise reproduced in whole or in part or used for any purpose without the prior permission of NTA.</p> <p>b. This drawing is to be used for the design element identified in the Block. Other information shown is to be considered indicative only. The drawing is to be read in conjunction with all other relevant design drawings.</p> <p>c. U.S. data used for plans are printed under © Ordnance Survey Ireland Government of Ireland. All rights reserved. Licence Number 2022/OSI_NIMA_180 National Transport Authority. All elevations are in metres and relate to OS Geoid Model (OSGM15) Mean Head. All Co-ordinates are in Irish Transverse Mercator Grid (ITM) as defined by OSI active local GPS stations.</p> <p>d. Information concerning the position of apparatus shown on this drawing is based on drawings supplied by the utility owners and/or the utility works contractor, whilst every care has been taken in the preparation of this drawing, positions should be taken as approximate and are intended for general guidance only and no representation is made by the NTA as to the accuracy, completeness, sufficiency or otherwise of this drawing and the position of the apparatus. The information contained herein does not purport to be comprehensive or final as the apparatus is subject to being altered and/or superseded. Recipients should not rely on this information. Any liabilities are hereby expressly disclaimed.</p> <p>e. The information contained herein has been provided by the NTA but does not purport to be comprehensive or final. Recipients should not rely on the information, neither the NTA nor any of its directors, officers, employees, agents, stakeholders or advisers make any representation or warranty as to, or accept any liability or responsibility in relation to, the accuracy, completeness, sufficiency or otherwise of the information provided as part of this document or any matter on which the information is based (including but not limited to loss or damage arising as a result of reliance by recipients on the information or any part of it. Any liabilities are hereby expressly disclaimed.</p>		<table border="1"> <thead> <tr> <th>Rev</th> <th>Date</th> <th>Drn</th> <th>Chk'd</th> <th>App'd</th> <th>Description</th> </tr> </thead> <tbody> <tr> <td>M01</td> <td>23/09/22</td> <td>DS</td> <td>AD</td> <td>CA</td> <td>ISSUE FOR PHASE 4 : PLANNING</td> </tr> <tr> <td> </td> <td> </td> <td> </td> <td> </td> <td> </td> <td> </td> </tr> <tr> <td> </td> <td> </td> <td> </td> <td> </td> <td> </td> <td> </td> </tr> <tr> <td> </td> <td> </td> <td> </td> <td> </td> <td> </td> <td> </td> </tr> </tbody> </table>	Rev	Date	Drn	Chk'd	App'd	Description	M01	23/09/22	DS	AD	CA	ISSUE FOR PHASE 4 : PLANNING																			<p>Client</p> <p>Údarás Náisiúnta Iompair National Transport Authority</p>	<p>Consultant</p>	<p>Project Title</p> <p>Lucan to City Centre Core Bus Corridor Scheme</p>
		Rev	Date	Drn	Chk'd	App'd	Description																												
M01	23/09/22	DS	AD	CA	ISSUE FOR PHASE 4 : PLANNING																														
<p>Date</p> <p>23/09/2022</p> <p>Project Code</p> <p>BCIDA</p>	<p>Scale @ A3</p> <p>N/A</p> <p>Originator Code</p> <p>ACM</p>	<table border="1"> <thead> <tr> <th>Drawn</th> <th>Checked</th> <th>Approved</th> </tr> </thead> <tbody> <tr> <td>DS</td> <td>AD</td> <td>CA</td> </tr> </tbody> </table> <p>GMS Code:</p>	Drawn	Checked	Approved	DS	AD	CA	<p>Drawing Title</p> <p>Figure 17.2.8.1 Photomontage View 08 As Existing View from North across Chapelizod Hill Road</p> <p>Drawing File Reference</p> <p>BCIDA-ACM-ENV_LA-0006_XX_00-DR-LL-000</p> <p>Sheet Number</p> <p>34 of 37</p> <p>Status</p> <p>A</p> <p>Rev</p> <p>M01</p>																										
Drawn	Checked	Approved																																	
DS	AD	CA																																	



< 73.7° / 24mm | < 65.5° / 28mm | < 54.4° / 35mm | < 39.6° / 50mm | < 28.8° / 70mm | ANGLE OF VISION / LENS FOCAL LENGTH | 70mm / 28.8° > | 50mm / 39.6° > | 35mm / 54.4° > | 28mm / 65.5° > | 24mm / 73.7° > |

Date and Time of baseline photograph: 18/11/2020 16:59:35

<p>Disclaimer</p> <p>a. National Transport Authority (NTA) 2022. This drawing is confidential and the copyright in it is owned by NTA. This drawing must not be either loaned, copied or otherwise reproduced in whole or in part or used for any purpose without the prior permission of NTA.</p> <p>b. This drawing is to be used for the design element identified in the Release. Other information shown is to be considered indicative only. The drawing is to be read in conjunction with all other relevant design drawings.</p> <p>c. O.S. data used for plans are printed under © Ordnance Survey Ireland Government of Ireland. All rights reserved. Licence Number 2022/OS_NMA_180 National Transport Authority. All elevations are in metres and relate to OS Geoid Model (OSGM15) Mean Head. All Co-ordinates are in Irish Transverse Mercator Grid (ITM) as defined by OSI active local GPS station.</p> <p>d. Information concerning the position of apparatus shown on this drawing is based on drawings supplied by the utility owners and/or the utility works contractor, whilst every care has been taken in the preparation of this drawing, positions should be taken as approximate and are intended for general guidance only and no representation is made to the NTA as to the accuracy, completeness, sufficiency or otherwise of this drawing and the position of the apparatus. The information contained herein does not purport to be comprehensive or final as the apparatus is subject to being altered and/or superseded. Recipients should not rely on this information. Any liabilities are hereby expressly disclaimed.</p> <p>e. The information contained herein has been provided by the NTA but does not purport to be comprehensive or final. Recipients should not rely on the information. Neither the NTA nor any of its directors, officers, employees, agents, consultants or advisers make any representation or warranty as to, or accept any liability or responsibility in relation to, the accuracy, accuracy, reasonableness or completeness of the information provided as part of this document or any matter on which the information is based (including but not limited to loss or damage arising as a result of reliance by recipients on the information or any part of it. Any liabilities are hereby expressly disclaimed.</p>	<table border="1"> <thead> <tr> <th>Rev</th> <th>Date</th> <th>Drn</th> <th>Chk'd</th> <th>App'd</th> <th>Description</th> </tr> </thead> <tbody> <tr> <td>M01</td> <td>23/09/22</td> <td>DS</td> <td>AD</td> <td>CA</td> <td>ISSUE FOR PHASE 4 : PLANNING</td> </tr> <tr> <td> </td> <td> </td> <td> </td> <td> </td> <td> </td> <td> </td> </tr> <tr> <td> </td> <td> </td> <td> </td> <td> </td> <td> </td> <td> </td> </tr> <tr> <td> </td> <td> </td> <td> </td> <td> </td> <td> </td> <td> </td> </tr> <tr> <td> </td> <td> </td> <td> </td> <td> </td> <td> </td> <td> </td> </tr> </tbody> </table>	Rev	Date	Drn	Chk'd	App'd	Description	M01	23/09/22	DS	AD	CA	ISSUE FOR PHASE 4 : PLANNING																									<p>Client</p> <p>NTA Údarás Náisiúnta Iompair National Transport Authority</p> <p>Date: 23/09/2022 Scale: @ A3</p> <p>Project Code: BCIDA Originator Code: ACM</p>	<p>Consultant</p> <p>3D DESIGN BUREAU</p> <table border="1"> <thead> <tr> <th>Drawn</th> <th>Checked</th> <th>Approved</th> </tr> </thead> <tbody> <tr> <td>DS</td> <td>AD</td> <td>CA</td> </tr> </tbody> </table> <p>GMS Code:</p>	Drawn	Checked	Approved	DS	AD	CA	<p>Project Title</p> <p>Lucan to City Centre Core Bus Corridor Scheme</p> <p>Drawing Title</p> <p>Figure 17.2.8.2 Photomontage View 08 As Proposed View from North across Chapelizod Hill Road</p> <p>Drawing File Reference: BCIDA-ACM-ENV_LA-0006_XX_00-DR-LL-000 Sheet Number: 35 of 37 Status: A Rev: M01</p>
	Rev	Date	Drn	Chk'd	App'd	Description																																								
M01	23/09/22	DS	AD	CA	ISSUE FOR PHASE 4 : PLANNING																																									
Drawn	Checked	Approved																																												
DS	AD	CA																																												



< 39.6° / 50mm | < 28.8° / 70mm | ANGLE OF VISION / LENS FOCAL LENGTH | 70mm / 28.8° > | 50mm / 39.6° >

Date and Time of baseline photograph: 18/11/2020 16:59:35

<p>Disclaimer</p> <p>a. National Transport Authority (NTA) 2022. This drawing is confidential and the copyright in it is owned by NTA. This drawing must not be either loaned, copied or otherwise reproduced in whole or in part or used for any purpose without the prior permission of NTA.</p> <p>b. This drawing is to be used for the design element identified in the Release. Other information shown is to be considered indicative only. The drawing is to be read in conjunction with all other relevant design drawings.</p> <p>c. O.S. data used for plans are printed under © Ordnance Survey Ireland Government of Ireland. All rights reserved. Licence Number 2022/OSS, NMA, 180 National Transport Authority. All elevations are in metres and relate to OSG (OSD Model (OSGM15) Mean Head. All Co-ordinates are in Irish Transverse Mercator Grid (ITM) as defined by OSI active local GPS station.</p> <p>d. Information concerning the position of apparatus shown on this drawing is based on drawings supplied by the utility owners and/or the utility works contractor, whilst every care has been taken in the preparation of this drawing, positions should be taken as approximate and are intended for general guidance only and no representation is made to the NTA as to the accuracy, completeness, sufficiency or otherwise of this drawing and the position of the apparatus. The information contained herein does not purport to be comprehensive or final as the apparatus is subject to being altered and/or superseded. Recipients should not rely on this information. Any liabilities are hereby expressly disclaimed.</p> <p>e. The information contained herein has been provided by the NTA but does not purport to be comprehensive or final. Recipients should not rely on the information. Neither the NTA nor any of its directors, officers, employees, agents, consultants or advisors make any representation or warranty as to, or accept any liability or responsibility in relation to, the adequacy, accuracy, reasonableness or completeness of the information provided as part of this document or any matter on which the information is based (including but not limited to loss or damage arising as a result of reliance by recipients on the information or any part of it. Any liabilities are hereby expressly disclaimed.</p>		<table border="1"> <thead> <tr> <th>Rev</th> <th>Date</th> <th>Des</th> <th>Chk'd</th> <th>App'd</th> <th>Description</th> </tr> </thead> <tbody> <tr> <td>M01</td> <td>23/09/22</td> <td>DS</td> <td>AD</td> <td>CA</td> <td>ISSUE FOR PHASE 4 : PLANNING</td> </tr> <tr> <td> </td> <td> </td> <td> </td> <td> </td> <td> </td> <td> </td> </tr> <tr> <td> </td> <td> </td> <td> </td> <td> </td> <td> </td> <td> </td> </tr> <tr> <td> </td> <td> </td> <td> </td> <td> </td> <td> </td> <td> </td> </tr> <tr> <td> </td> <td> </td> <td> </td> <td> </td> <td> </td> <td> </td> </tr> </tbody> </table>	Rev	Date	Des	Chk'd	App'd	Description	M01	23/09/22	DS	AD	CA	ISSUE FOR PHASE 4 : PLANNING																									<p>Client</p> <p>Údarás Náisiúnta Iompair National Transport Authority</p>	<p>Consultant</p>	<p>Project Title</p> <p>Lucan to City Centre Core Bus Corridor Scheme</p>
		Rev	Date	Des	Chk'd	App'd	Description																																		
M01	23/09/22	DS	AD	CA	ISSUE FOR PHASE 4 : PLANNING																																				
<p>Date</p> <p>23/09/2022</p> <p>Project Code</p> <p>BCIDA</p>	<p>Scale</p> <p>@ A3 N/A</p> <p>Originator Code</p> <p>ACM</p>	<table border="1"> <thead> <tr> <th>Drawn</th> <th>Checked</th> <th>Approved</th> </tr> </thead> <tbody> <tr> <td>DS</td> <td>AD</td> <td>CA</td> </tr> </tbody> </table> <p>GMS Code:</p>	Drawn	Checked	Approved	DS	AD	CA	<p>Drawing Title</p> <p>Figure 17.2.8.3 Photomontage View 08 As Existing View from North across Chapelizod Hill Road</p> <p>Drawing File Reference</p> <p>BCIDA-ACM-ENV_LA-0006_XX_00-DR-LL-000</p> <p>Sheet Number</p> <p>36 of 37</p> <p>Status</p> <p>A</p> <p>Rev</p> <p>M01</p>																																
Drawn	Checked	Approved																																							
DS	AD	CA																																							



< 39.6° / 50mm | < 28.8° / 70mm | ANGLE OF VISION / LENS FOCAL LENGTH | 70mm / 28.8° > | 50mm / 39.6° >

Date and Time of baseline photograph: 18/11/2020 16:59:35

Disclaimer
 a. National Transport Authority (NTA) 2022. This drawing is confidential and the copyright in it is owned by NTA. This drawing must not be either loaned, copied or otherwise reproduced in whole or in part or used for any purpose without the prior permission of NTA.
 b. This drawing is to be used for the design element identified in the Block. Other information shown is to be considered indicative only. The drawing is to be read in conjunction with all other relevant design drawings.
 c. O.S. data used for plans are printed under © Ordnance Survey Ireland Government of Ireland. All rights reserved. Licence Number 2022/OSI, NMA, 180 National Transport Authority. All elevations are in metres and relate to OS Geoid Model (OSGM15) Mean Head. All Co-ordinates are in Irish

Transverse Mercator Grid (ITM) as defined by OSI active local GPS station.
 d. Information concerning the position of apparatus shown on this drawing is based on drawings supplied by the utility owners and/or the utility works contractor, whilst every care has been taken in the preparation of this drawing, positions should be taken as approximate and are intended for general guidance only and no representation is made to the NTA as to the accuracy, completeness, sufficiency or otherwise of this drawing and the position of the apparatus. The information contained herein does not purport to be comprehensive or final as the apparatus is subject to being altered and/or superseded. Recipients should not rely on this information. Any liabilities are hereby expressly disclaimed.

e. The information contained herein has been provided by the NTA but does not purport to be comprehensive or final. Recipients should not rely on the information. Neither the NTA nor any of its directors, officers, employees, agents, consultants or advisers make any representation or warranty as to, or accept any liability or responsibility in relation to, the adequacy, accuracy, reasonableness or completeness of the information provided as part of this document or any matter on which the information is based (including but not limited to loss or damage arising as a result of reliance by recipients on the information or any part of it. Any liabilities are hereby expressly disclaimed.



Rev	Date	Drn	Chk'd	App'd	Description
M01	23/09/22	DS	AD	CA	ISSUE FOR PHASE 4 : PLANNING

Client
NTA
 Údarás Náisiúnta Iompair
 National Transport Authority

Date: 23/09/2022
 Scale: A3
 Project Code: BCIDA
 Originator Code: ACM

Consultant
3D DESIGN BUREAU

Drawn: DS
 Checked: AD
 Approved: CA

GMS Code:

Project Title
 Lucan to City Centre Core Bus Corridor Scheme

Drawing Title
 Figure 17.2.8.4
 Photomontage View 08 As Proposed
 View from North across Chapelizod Hill Road

Drawing File Reference: BCIDA-ACM-ENV_LA-0006_XX_00-DR-LL-000
 Sheet Number: 37 of 37
 Status: A
 Rev: M01